

Cat Show On the Cape!

Cats on the Beach



September 11-12, 2010

**Marstons Mills East Horace Mann Charter Public School
730 Osterville-West Barnstable Road Marstons Mills, MA**

SHOW HOURS • 9:00 AM - 4:00 PM





Cat Show On the Cape



September 11-12, 2010

Marstons Mills East Horace Mann Charter Public School
730 Osterville-West Barnstable Road Marstons Mills, MA

Our Judges

Saturday

Judge	Clerk	Sponsor
Pam Barrett (SP)	Elaine Hawksworth-Weitz	
Paul Lahey (AB)	Jaime Christian	
Richard Bailey (AB)	Chris Unangst	
Francine Hicks (SP)	Alisa Bobinski	Cerise Cattery
Donna Madison (AB)	Karen Moculeski	Atlastcats
Rene Knapp (AB)	Mike Vasquez	
Francine Hicks - Congress (Male)		
Donna Madison - Congress (AB Male & Female)		

Sunday

Judge	Clerk	Sponsor
Marilyne Dombroskie (AB)	Elaine Hawksworth-Weitz	
Pam Barrett (AB)	Susan Erikson	
Dewane Barnes (AB)	Mike Vasquez	Allpurrs
Odette Lamoureaux (AB)	Alisa Bobinski	Sweetwood Norwegian Forest Cats
Lisa Dickie (AB)	Chris Unangst	
James Reardon (SP)	Jaime Christian	Friends of James Reardon
Rene Knapp - Congress (Female)		
Richard Bailey - Congress (AB Male & Female)		



Cat Show On the Cape



September 11-12, 2010

Marstons Mills East Horace Mann Charter Public School
730 Osterville-West Barnstable Road Marstons Mills, MA

Show Committee

Show Manager – Saturday
Melissa Alexander

Show Managers – Sunday
Melissa Alexander & Paul Lahey

Master Clerk
Christina Baumer

Entry Clerk
Christian Cherau

Show Committee

Sue, Chris, Christian and Emilee Cherau, Melissa,
George and Christina Alexander, Siobhan Moore,
Barbara Garneau, Jean Campeau, James Reardon

**NON-CHAMPIONSHIP
LONGHAIR KITTENS**

SATURDAY

PB PL RB FH DM RK

SUNDAY

MD PB DB OL LD JR

BIRMAN

POINTED SOLID & WHITE DIVISION

BLUE POINT GLOVED

1 1 1 1 1 1

1 PIRATESLAIR HEAVE HO
SBT 032310 024 BORN: 03/23/10
Pirateslair French Toast
Pirateslair Eye Candee
B: Laurie Patton

0.5 M 1

1 1 1 1 1 1

MA D: A McKenzie/Laurie Patton

MA

1 1 1 1 1 1

BEST OF DIVISION/BREED

1 1 1 1 1 1

HIMALAYAN

POINTED SOLID DIVISION

RED POINT

1 1 1 1 1 1

2 HISTORICATS QUEEN O HEARTS
SBV 032610 009 BORN: 03/26/10
Radzaczat Bismarck of Historicats
Radzaczat Hermione of Historicats
NE B/O: Sue/Christian/Emilie Cherau

0.5 F 2

1 1 1 1 1 1

2 2 2 2 2 2

BEST OF DIVISION

NE

2 2 2 2 2 2

POINTED TORTIE DIVISION

BLUE TORTIE POINT

1 A 1 1 1 1

3 BEAUCHADOR LA CATT
SBV 050910 BORN: 05/09/10
Beauchador Mes Aieux
Catta Jade of Beauchador
NE B/O: Andre Grenier

0.4 F 3

1 1 1 1 1 1

3 x 3 3 3 3

BEST OF DIVISION

NE

3 3 3 3 3 3

2 2 2 2 2 2

BEST OF BREED

3 2 2 3 2 3

3 x 3 3 3 3

2ND BEST OF BREED

2 3 3 2 3 2

**NON-CHAMPIONSHIP
LONGHAIR KITTENS**

SATURDAY

PB PL RB FH DM RK

SUNDAY

MD PB DB OL LD JR

MAINE COON

TRADITIONAL SOLID DIVISION

BLACK

1 1 1 1 1 1

4 ROYALLIONS LUNAR ECLIPSE OF MTNEST 0.6 F 4
 SBT 030210 021 BORN: 03/02/10
 IW SGC Royallions Count Blackula
 Broadway Blueella of Royallions
 B: Janie/Allen Harris
 MA O: Judy/David Bernbaum
 A: McFadden

1 1 1 1 1 1

4 4 4 4 4 4

BEST OF DIVISION

4 4 4 4 4 4

TRADITIONAL TABBY DIVISION

BROWN MACKEREL TABBY

1 1 1 1 1 1

5 SMOOCHNCOONS ALEISTER OF MARIKOONS 0.5 M 5
 SBT 031510 040 BORN: 03/15/10
 Mainette Swagger of Smoochncoons
 Smoochncoons Chantell
 B: Nadine Gill
 NE O: Jeanne & Robert Marikle
 9 SBT012010 029

1 1 1 1 1 1

1 1 1 1 1 1
5 9 5 5 5 9
9 5 9 9 9 5

BEST OF DIVISION
2nd DIV

0-7F NE
1 1 1 1 1 1
9 9 5 9 5 9
5 5 9 5 9 5

TRADITIONAL SILVER/SMOKE DIVISION

BLACK SILVER CLASSIC TABBY

1 1 1 1 1 1

6 ATLASTCATS PATOOTIE 0.7 F 6
 PENDING BORN: 01/14/10
 Atlascats Noreaster
 Petteycats Gotmilk of Atlascats
 NE B/O: Marie Harriman & Chris Condon

1 1 1 1 1 1

6 6 6 6 6 6

BEST OF DIVISION

6 6 6 6 6 6

TRADITIONAL TORTIE & WHITE DIVISION

BLACK TORTIE & WHITE

1 1 1 1 1 1

7 SMOOCHNCOONS GYPSY 0.5 F 7
 SBT 041010 012 BORN: 04/10/10
 CH Smoochncoons Prince Caspians Legacy
 CH Smoochncoons Tia Dalma
 NE B/O: Nadine Gill

1 1 1 1 1 1

7 7 7 7 7 7

BEST OF DIVISION

7 7 7 7 7 7

**NON-CHAMPIONSHIP
LONGHAIR KITTENS**

SATURDAY

PB PL RB FH DM RK

SUNDAY

MD PB DB OL LD JR

(MAINE COON continued)

TRADITIONAL TABBY & WHITE DIVISION

BROWN CLASSIC TABBY & WHITE

<p>1 1 1 1 1 1</p>	<p>8 DRACONFLY LUCCIOLA OF BEIGATTI 0.5 F 8</p> <p>SBT032510009 BORN: 03/25/10</p> <p>RW SGC Codycats Hendrickson of Dracoonyfly QGC Dracoonyfly Flashabou Cattis B: Sharon Stegall</p> <p>NE O: Jo-Ann Benedetti NE</p>	<p>1 1 1 1 1 1</p>
--------------------	---	--------------------

<p><u>TR TO TABBY DIV</u></p>	<p>9 TRIBALCATS FIONA OF KATZAPURRIN 0.7 F 9</p> <p>SBT 012010 029 BORN: 01/20/10</p> <p>Maine Delite Drayton of Tribalcats MaineyClassic Molly of Tribalcats B: Valerie Walker</p> <p>NE O: Lisa Burtsche NE A: Susan Erikson</p>	<p><u>TR TO TABBY DIV</u></p>
-------------------------------	--	-------------------------------

<p>2 2 2 2 2 2</p>	<p>10 GGLEGACY ANGEL BLAZE 0.4 M 10</p> <p>PENDING BORN: 05/05/10</p> <p>CH GGLegacy Angel Kola Tufts'n Ruff Petoune of GGLegacy</p> <p>NE B/O: Gisele M Duplessis NE</p>	<p>2 2 2 2 2 2</p>
--------------------	---	--------------------

BLUE CLASSIC TABBY & WHITE

<p>1 1 1 1 1 1</p>	<p>11 GGLEGACY ANGEL TWOBLUEHEEL 0.4 F 11</p> <p>PENDING BORN: 04/14/10</p> <p>Cancoon Zeus Almighty of GGLegacy Tykakats Dreamer of GGLegacy</p> <p>NE B/O: Gisele M Duplessis NE</p>	<p>1 1 1 1 1 1</p>
--------------------	--	--------------------

BLUE MACKEREL TABBY & WHITE

<p>1 1 1 1 1 1</p>	<p>12 GGLEGACY COOL BLUE ANGEL 0.4 F 12</p> <p>PENDING BORN: 05/05/10</p> <p>CH GGLegacy Angel Kola Tufts'n Ruff Petoune of GGLegacy</p> <p>NE B/O: Gisele M Duplessis NE</p>	<p>1 1 1 1 1 1</p>
--------------------	---	--------------------

RED CLASSIC TABBY & WHITE

<p>1 1 1 1 1 1</p>	<p>13 KELIMCOONS BELLE OF THE BALL 0.6 F 13</p> <p>PENDING BORN: 02/19/10</p> <p>GC Kelimcoons James Sawyer Ford DGC Hollishill Evangeline of Kelimcoons</p> <p>NE B/O: Rita-Kim-Kelly Berg NE</p>	<p>1 1 1 1 1 1</p>
--------------------	--	--------------------

**NON-CHAMPIONSHIP
LONGHAIR KITTENS**

SATURDAY

PB PL RB FH DM RK

<u>13</u>	<u>13</u>	<u>13</u>	<u>13</u>	<u>13</u>	<u>8</u>
<u>8</u>	<u>11</u>	<u>8</u>	<u>11</u>	<u>8</u>	<u>13</u>
<u>12</u>	<u>8</u>	<u>11</u>	<u>8</u>	<u>11</u>	<u>11</u>

(MAINE COON continued)

BEST OF DIVISION
2ND BEST OF DIVISION
3RD BEST OF DIVISION

SUNDAY

MD PB DB OL LD JR

<u>13</u>	<u>13</u>	<u>13</u>	<u>13</u>	<u>13</u>	<u>8</u>
<u>8</u>	<u>8</u>	<u>8</u>	<u>8</u>	<u>8</u>	<u>11</u>
<u>12</u>	<u>11</u>	<u>11</u>	<u>11</u>	<u>11</u>	<u>13</u>

TRADITIONAL SILVER/SMOKE & WHITE DIVISION

BLACK SILVER CLASSIC TORBIE & WHITE

<u>1</u>	<u>1</u>	<u>1</u>	<u>1</u>	<u>1</u>	<u>1</u>
----------	----------	----------	----------	----------	----------

14 WOODPILE FLASH DANCE OF SMOKEYCOONS 0.7 F 14
SBT 011710 014 BORN: 01/17/10
IW SGC Coonbitzky Frost Fire of Woodpile
RW SGC Woodpile Rumor Has It
B: Jan Dell/Kaiti Dell
NW O: E Hawksworth-Weitz/F Weitz

<u>1</u>	<u>1</u>	<u>1</u>	<u>1</u>	<u>1</u>	<u>1</u>
----------	----------	----------	----------	----------	----------

<u>14</u>	<u>14</u>	<u>14</u>	<u>14</u>	<u>14</u>	<u>14</u>
<u>4</u>	<u>14</u>	<u>8</u>	<u>7</u>	<u>4</u>	<u>8</u>
<u>13</u>	<u>4</u>	<u>13</u>	<u>13</u>	<u>5</u>	<u>9</u>
<u>14</u>	<u>9</u>	<u>7</u>	<u>4</u>	<u>13</u>	<u>4</u>

BEST OF DIVISION

BEST OF BREED
2ND BEST OF BREED
3RD BEST OF BREED

NW

<u>14</u>	<u>14</u>	<u>14</u>	<u>14</u>	<u>14</u>	<u>14</u>
<u>14</u>	<u>4</u>	<u>5</u>	<u>14</u>	<u>13</u>	<u>9</u>
<u>9</u>	<u>13</u>	<u>13</u>	<u>4</u>	<u>4</u>	<u>8</u>
<u>4</u>	<u>14</u>	<u>14</u>	<u>6</u>	<u>3</u>	<u>11</u>

MUNCHKIN LONGHAIR

MINK SOLID & WHITE DIVISION

BLUE MINK & WHITE

<u>1</u>	<u>1</u>	<u>1</u>	<u>1</u>	<u>1</u>	<u>1</u>
----------	----------	----------	----------	----------	----------

15 RUGRUNNERS PHOENIX 0.6 M 15
SBV 031110 014 BORN: 03/11/10
Munchkinlane S Flash Back
Rugrunners Chameleon
MA B/O: Sherri McConnell

<u>1</u>	<u>1</u>	<u>1</u>	<u>1</u>	<u>1</u>	<u>1</u>
----------	----------	----------	----------	----------	----------

<u>15</u>	<u>15</u>	<u>15</u>	<u>15</u>	<u>15</u>	<u>15</u>
-----------	-----------	-----------	-----------	-----------	-----------

BEST OF DIVISION/BREED

MA

<u>15</u>	<u>15</u>	<u>15</u>	<u>15</u>	<u>15</u>	<u>15</u>
-----------	-----------	-----------	-----------	-----------	-----------

NORWEGIAN FOREST

TRADITIONAL TORTIE & WHITE DIVISION

BLACK TORTIE & WHITE

<u>1</u>	<u>1</u>	<u>1</u>	<u>1</u>	<u>1</u>	<u>1</u>
----------	----------	----------	----------	----------	----------

16 INTO WISHIN LADY GODIVA 0.6 F 16
SBT 030510 002 BORN: 03/05/10
RW SGC Dropax am Barenbach
RW SGC Hanne av Boxerhaven
B: Melissa Alexander
NE O: M Alexander & C Stromstad

<u>1</u>	<u>1</u>	<u>1</u>	<u>1</u>	<u>1</u>	<u>1</u>
----------	----------	----------	----------	----------	----------

<u>16</u>	<u>16</u>	<u>16</u>	<u>16</u>	<u>16</u>	<u>16</u>
-----------	-----------	-----------	-----------	-----------	-----------

BEST OF DIVISION/BREED

NE

<u>16</u>	<u>16</u>	<u>16</u>	<u>16</u>	<u>16</u>	<u>16</u>
-----------	-----------	-----------	-----------	-----------	-----------

**NON-CHAMPIONSHIP
LONGHAIR KITTENS**

SATURDAY
PB PL RB FH DM RK

SUNDAY
MD PB DB OL LD JR

PERSIAN

TRADITIONAL SOLID DIVISION

BLUE

1 1 1 1 1 1

17 FOUNTAINHEAD DELUGE OF NYMEWS
PENDING BORN: 02/10/10
Exton Along Came a Spider
Fountainhead Bi Request
B: Tom Egener

0.7 M 17

1 1 1 1 1 1

NE O: Sally Dockstader

NE

17 17 17 17 17 17

BEST OF DIVISION

17 17 17 17 17 17

TRADITIONAL TABBY DIVISION

BROWN CLASSIC TORBIE

1 1 1 2 1 1

18 RADZACATZ BONNIE BELL OF THE BALL
SBV 040610 022 BORN: 04/06/10
TNT Puff's Zorro of Radzacatz
Radzacatz Paris
B: Elaine and Amber Radzevich

0.5 F 18

2 1 2 2 1 1

NE O: Radzevich/Paris

NE

2 2 2 1 2 2

19 RADZACATZ LADY GAGA
SBV 012110 030 BORN: 01/21/10
Playwickey's Sir Alec of Radzacatz
Radzacatz Mimsy

0.7 F 19

1 2 1 1 2 2

NE B/O: Elaine and Amber Radzevich

NE

18 18 18 19 18 18
19 19 19 18 19 19

BEST OF DIVISION
2ND BEST OF DIVISION

19 18 19 19 18 18
18 19 18 18 19 19

TRADITIONAL SOLID & WHITE DIVISION

RED & WHITE

1 1 1 1 1 1

20 SUGARSPUN COOPER OF ANOUCHKA
PENDING BORN: 03/23/10
Budmar Ringo of Sugar spun
Sugar spun Summer Lovin
B: John Passet

0.5 M 20

1 1 1 1 1 1

NE O: Brigitte Pouliot

NE

20 20 20 20 20 20

BEST OF DIVISION

20 20 20 20 20 20

20 17 18 20 17 17
17 20 20 17 18 18
18 18 17 19 19 20

BEST OF BREED
2ND BEST OF BREED
3RD BEST OF BREED

20 20 17 20 20 20
19 17 19 17 17 17
17 18 20 19 18 18

**NON-CHAMPIONSHIP
LONGHAIR KITTENS**

SATURDAY

PB PL RB FH DM RK

SUNDAY

MD PB DB OL LD JR

RAGDOLL

POINTED SOLID DIVISION

SEAL POINT

1 2 2 1 1 2

21 SUNNYBROOK TIKI TIKI
SBT 033010 037 BORN: 03/30/10
Cadbury of Sunnybrook
CH Sunnybrook Bridget
B: Denise Celona
NE O: Zilicia Howard

0.5 M 21

1 1 1 1 1 2

2 1 1 2 2 1

22 SUNNYBROOK SHANIQUA
SBT 033010 038 BORN: 03/30/10
Cadbury of Sunnybrook
CH Sunnybrook Bridget
NE B/O: Denise Celona

0.5 F 22

2 2 2 A 2 1

21 22 22 21 21 22
22 21 21 22 22 21

BEST OF DIVISION
2ND BEST OF DIVISION

21 21 21 21 21 22
22 22 22 X 22 21

POINTED SOLID & WHITE DIVISION

SEAL POINT MITTED

1 1 1 1 1 1

23 WILLOWTREERAGS KINGSTON
SBT 042510 BORN: 04/25/10
RW QGC Tatjana Tao Shang of WillowTreeRags
Ragbencher Lucy In The Sky of WillowTreeRags
B: Mable Roberts
NE O: Lisa Sullo

0.4 M 23

1 1 1 1 1 1

BLUE POINT MITTED

1 1 1 1 1 1

24 SUNNYBROOK SNOW BELLE
SBT 042710 038 BORN: 04/27/10
RW SGC Sunnybrook Jack Frost
RW QGC Ragangeis Sweet Noal of Sunnybrook
NE B/O: Denise Celona

0.4 F 24

1 1 1 1 1 1

24 23 24 24 24 23
23 24 23 23 23 24

BEST OF DIVISION
2ND BEST OF DIVISION

24 23 24 24 24 24
23 24 23 23 23 23

**NON-CHAMPIONSHIP
LONGHAIR KITTENS**

SATURDAY
PB PL RB FH DM RK

SUNDAY
MD PB DB OL LD JR

(RAGDOLL continued)

POINTED TABBY & WHITE DIVISION

BLUE LYNX POINT MITTED

| | | | |

25 RAGANGELS BLUE THUNDER
SBT 031510 007 BORN: 03/15/10
Buxtonsgardoo Mocha Madness
RagAngels Bettle
NE B/O: Sandy Wooster

0.5 M 25 | | | | |

25 25 25 25 25 25
21 25 25 21 21 25
22 22 24 24 21 23
25 23 22 23 25 24

BEST OF DIVISION

BEST OF BREED
2ND BEST OF BREED
3RD BEST OF BREED

NE

25 25 25 25 25 25
24 21 25 25 21 25
21 23 21 24 22 22
25 22 22 21 24 24

SIBERIAN

TRADITIONAL TABBY DIVISION

BROWN CLASSIC TORBIE

26 KOKOPELLIES CZARINA NIKOVA
SBT 030810 024 BORN: 03/08/10
IW SGC Kokopellies Czar Nicholas
Kokopellies Katarina
B: Jon Van Duinwyk
NE O: Linda Levine

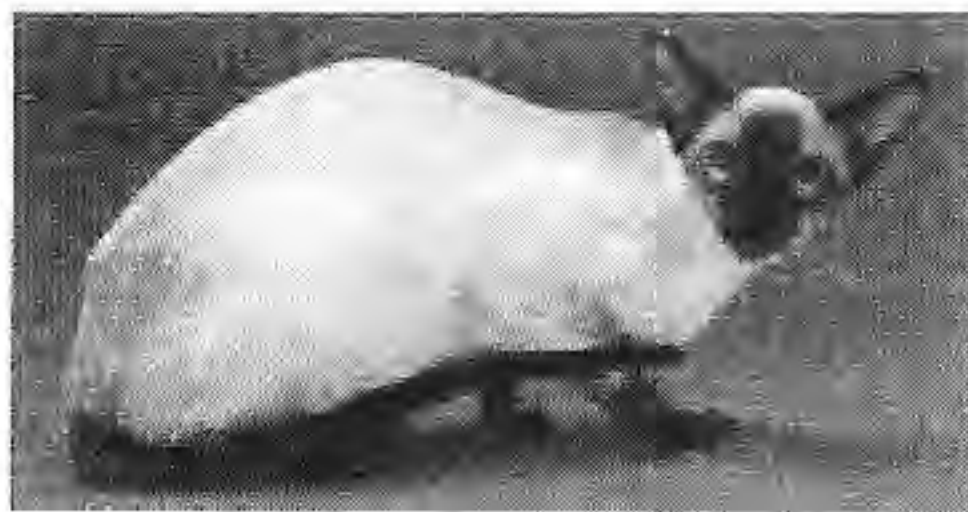
0.6 F 26 | | | | |

* * * * *

BEST OF DIVISION/BREED

NE

26 26 26 26 26 26



Mollercats

Judith Moller/Karen Moleculeski
www.mollercats.com
judymolle@aol.com
1-512-347-0381

*Seal, Blue, Chocolate
and Lilac-Point Siamese*

*Red, Tortie and Pointed
Oriental Shorthairs*

**NON-CHAMPIONSHIP
SHORTHAIR KITTENS**

SATURDAY

PB PL RB FH DM RK

SUNDAY

MD PB DB OL LD JR

AMERICAN WIREHAIR

TRADITIONAL SILVER/SMOKE DIVISION

BLACK SMOKE

1 1 1 1 1 1

51 BEAUCHADOR WIRED ON SMOKE 0.5 F 51
SBV 040710 001 BORN: 04/07/10
Beauchador Silverado
Beauchador Blanche Dubois
NE B/O: Andre Grenier

1 1 1 1 1 1

NE

51 51 51 51 51 51

BEST OF DIVISION/BREED

51 51 51 51 51 51

BENGAL

TRADITIONAL TABBY DIVISION

BROWN SPOTTED TABBY

-5 -5 5 5 5

52 COZY COUNTRY BRAND NEW EYES 0.4 F 52
SBT 042410 013 BORN: 04/24/10
RW QGC Nahanni American Gangsta of CozyCountry
Cozy Country So U Think U Can Dance
NE B/O: Heidi LePage

A - A A A A

NE

1 2 3 1 1 3

53 NAHANNI SOME LIKE IT HOT 0.6 F 53
SBT 030510 014 BORN: 03/05/10
RW SGC Cukkla King Rameses of Nahanni
Askaribengals Tiara of Nahanni
NE B/O: Michele Alexion

3 1 2 2 1 -

NE

A A A A A A

54 AVENIR SINGS SOFTLY TO ME OF ANJOU 0.7 F 54
SBT 020510 023 BORN: 02/05/10
Gogees Wall Street Daze of Avenir
Gogees Southern Beelle of Avenir
B: Karen Vincent
MA O: Victoria Jeffers

A A A A A A

MA

4 4 4 4 4 2

55 OHANABENGALS TOPAZ GEISHA GIRL 0.6 F 55
SBT 030310 032 BORN: 03/03/10
Naamah Mercury at Midnight
Rising Sun of Indian Creek
NE B/O: Kim McCauslin

4 2 3 5 4 1

NE

2 3 2 3 3 1

56 INDIAN CREEK PO'AHU OF OHANABENGALS 0.5 M 56
SBT 040210 026 BORN: 04/02/10
IndianCreek Bad As I Wanna Be
Wildforest Hot Ember of IndianCreek
B: Norine Gordon
NE O: Kim McCauslin

1 3 4 4 2 2

NE

(color class continued)

**NON-CHAMPIONSHIP
SHORTHAIK KITTENS**

SATURDAY

PB PL RB FH DM RK

SUNDAY

MD PR DB OL LD JR

(BROWN SPOTTED TABBY BENGAL continued)

3 1 1 2 2 -

57 JUNGLEMIST TATTOO OF BENGALAND 0.7 M 57
SBT 012510 020 BORN: 01/25/10
Wildlove Winterwrk of Witchinghour
Bambusaforest Ashanti of Junglemist
B: Valerie Refner
MA 0: Hugh/Peggy Price MA
A: Donna Syverson

2 4 1 1 3 4

- - - - - 4

58 BENGALAND HOOAAHH OF CAVSCOUT 0.5 M 58
PENDING BORN: 03/28/10
IW SGC Bengalnd Royal Flush
RW SGC Shevangibengals Fortunecookie
B: Hugh and Peggy Price
NE 0: Karen Madden NE

5 5 5 - - 5

5 - 5 - - -

59 BENGALAND CHARMERS TRINKET 0.6 F 59
SBT 030810 BORN: 03/08/10
QGC Medoz Shapeshifter
RW SGC Bengalnd Charm Bracelet
MA B/O: Hugh/Peggy Price MA
A: Donna Syverson

- - - 3 5 3

53 51 51 53 53 56
56 53 56 51 51 55
51 56 53 56 56 53

BEST OF DIVISION
2ND BEST OF DIVISION
3RD BEST OF DIVISION

56 53 51 51 53 55
51 55 53 53 56 56
53 56 55 59 51 59

TRADITIONAL SILVER/SMOKE DIVISION

BLACK SILVER SPOTTED TABBY

1 1 1 1 1 1

60 MEDOZ TINSEL 0.4 F 60
SBT 050610 BORN: 05/06/10
RW SGC Zendada Suncatcher of Fianna
Fianna Smoke and Mirrors of Medoz
MA B/O: Donna Syverson MA
A: Hugh Price FOR SALE

1 1 1 1 1 1

60 60 60 60 60 60
53 51 51 53 53 56
56 53 56 51 51 55
51 56 53 56 56 53

BEST OF DIVISION
BEST OF BREED
2ND BEST OF BREED
3RD BEST OF BREED

60 60 60 60 60 60
56 53 51 51 53 60
51 55 53 53 56 55
53 56 55 59 51 56

**NON-CHAMPIONSHIP
SHORTHAIK KITTENS**

SATURDAY

PB PL RB FH DM RK

SUNDAY

MD PB DB OL LD JR

BOMBAY

TRADITIONAL SOLID DIVISION

BLACK

1 1 1 1 1 1

61 BURMARA LUCY FURRR
SBV 042110 005 BORN: 04/21/10
IW SGC Rickats Jack Trickortreat
Blacpurī Jade of Burmara
B: Barbara Garneau/D Hetherington
NE O: Barbara Garneau/Jean Campeau

0.4 F 61 1 1 1 1 1 1

61 61 61 61 61 61

BEST OF DIVISION/BREED

NE 61 61 61 61 61 61

BURMESE

SEPIA SOLID DIVISION

CHOCOLATE SEPIA

1 1 1 1 1 1

62 SABOKAH TAZ MANIA OF BURMARA
SBT 031710 026 BORN: 03/17/10
Aziz Outback Jack
Aurora Kalgoorlie Gold
B: Caria Purcell
NE O: Barbara Garneau

0.5 F 62 1 1 1 1 1 1

62 62 62 62 62 62

BEST OF DIVISION/BREED

NE 62 62 62 62 62 62

CORNISH REX

TRADITIONAL SOLID & WHITE DIVISION

BLUE & WHITE

1 1 1 1 1 1

63 TENDERCLAWS MARTIN OF KINGSRANSOM
PENDING BORN: 04/20/10
Tenderclaws Ashi
Tenderclaws Koko
B: Donna Kimber
GL O: ~~Jaime~~ Jaime Christian & Mike Vasquez
~~Jaime~~

0.4 M 63 1 1 1 1 1 1

63 63 63 63 63 63

BEST OF DIVISION/BREED

GL 63 63 63 63 63 63

**NON-CHAMPIONSHIP
SHORTHAIR KITTENS**

SATURDAY
PB PL RB FH DM RK

SUNDAY
MD PB DB OL LD JR

EGYPTIAN MAU

TRADITIONAL SILVER/SMOKE DIVISION

BLACK SILVER SPOTTED TABBY

1 1 1 1 1 1

64 ARETTA AJIB TAMMEN 0.6 M 64
SBT 022510 005 BORN: 02/25/10
RW SGC Nasran Aziz
RW CH Mausrus Sabiha Tarifa of Arietta
MA B/O: Evelyn Grado-Wolynies
A: Claire Turner

1 1 1 1 1 1

64 64 64 64 64 64

BEST OF DIVISION/BREED

64 64 64 64 64 64

ORIENTAL SHORTHAIR

TRADITIONAL TABBY DIVISION

BLUE TICKED TABBY

1 1 1 1 1 1

65 MINGHOU WICKED TICK ED OF CERISE 0.7 F 65
SBV 020510 004 BORN: 02/05/10
IW SGC Felichaun Finnan of Pengar
DGC BlueGem FlyBaby of Minghou
B: PMuise/MAlexander/PGarrett
NE O: Cherry Douglass

1 1 1 1 1 1

65 65 65 65 65 65

BEST OF DIVISION

65 65 65 65 65 65

TRADITIONAL SOLID & WHITE DIVISION

BLACK & WHITE

1 1 1 1 1 1

66 KAT-TRES MAGICAL MERLIN OF PENGAR 0.5 M 66
PENDING BORN: 03/24/10
RW Kat-Tres Lonesome Cowboy
Shagio-Chen Lola
B: Vicki H. Gill - Kathy Trerani
SC O: Penny Garrett/Pat Muise

1 1 1 1 1 1

66 66 66 66 66 66

BEST OF DIVISION

66 66 66 66 66 66

**NON-CHAMPIONSHIP
SHORTHAIR KITTENS**

SATURDAY

PB PL RB FH DM RK

SUNDAY

MD PB DB OL LD JR

(ORIENTAL SHORTHAIR continued)

TRADITIONAL TABBY & WHITE DIVISION

BLUE CLASSIC ^{TORTIE} & WHITE

1 1 1 1 1 1

67 KAT-TRES DELTA DAWN OF MINGHOU 0.5 F 67
PENDING BORN: 03/24/10
RW Kat-Tres Lonesome Cowboy
Shagio-Chen Lola
B: Vicki H. Gill - Kathy Trerani
SC O: Pat Muise/Penny Garrett

1 1 1 1 1 1

67 67 67 67 67 67

BEST OF DIVISION

67 67 67 67 67 67

66 66 66 66 65 66

BEST OF BREED

66 66 66 66 65 67

67 67 67 67 66 67

2ND BEST OF BREED

65 67 67 65 66 65

65 65 65 65 67 65

3RD BEST OF BREED

67 65 65 67 67 66

SPHYNX

TRADITIONAL SOLID DIVISION

WHITE

1 1 1 1 1 1

68 BAREBABIES MAGNUM OF TINAZ 0.7 M 68
SBT 012010 022 BORN: 01/20/10
SGC Bareassets Lambskin of Barebabies
Wizardgate Nothing to Peru Ve
B: Dr Brian and Cynthia Bailey
MA O: Christina Baumer

1 1 1 1 1 1

68 68 68 68 68 68

BEST OF DIVISION

68 68 68 68 68 68

POINTED SOLID & WHITE DIVISION

SEAL POINT & WHITE

1 1 1 1 1 1

69 DESTYNYS DYMUNDS OF RANDAZZLEME 0.7 M 69
SBT 020110 003 BORN: 02/01/10
Hadakat Lynard Skinner
Destynys In Bloom of Citizenkat
B: Carole Uhler-Bohan
MA O: Dawn Randazzo/Carole Uhler

1 1 1 1 1 1

69 69 69 69 69 69

BEST OF DIVISION

69 69 69 69 69 69

69 69 69 69 69 69

BEST OF BREED

68 69 69 68 68 69

68 68 68 68 68 68

2ND BEST OF BREED

69 68 68 69 69 68

NON-CHAMPIONSHIP
SHORTHAIR KITTENS

SATURDAY

PB PL RB FH DM RK

SUNDAY

MD PB DB OL LD JR

THAI

POINTED SOLID DIVISION

LILAC POINT

1 1 1 1 1 1

70 BABY BLUES WEEZER OF KATZAPURRIN
PENDING BORN: 04/23/10

Cosmopolotan of Baby Blues

Baby Blues Cassidy

B: Cheryl Ashe

NE O: Lisa Burtsche

70 70 70 70 70 70

BEST OF DIVISION/BREED

1 1 1 1 1 1

0.4 M 70

NE

70 70 70 70 70 70

**CHAMPIONSHIP
LONGHAIR CATS**

SATURDAY
PB PL RB FH DM RK

SUNDAY
MD PB DB OL LD JR

BIRMAN

POINTED SOLID & WHITE DIVISION

BLUE POINT GLOVED

1	1	1	1	1	1	101	MIKASU GRAFFITI ARTIST	1.6	M	101	1	1	1	1	1	1
							SBT 022509 031 BORN: 02/25/09									
							RW SGC MikaSu Brave Heart									
							QGC MikaSu Elegance									
						NW	B/O: Terry McRae			NW						
							A: Susan Schindelman									

101 101 101 101 101 101

BEST OF DIVISION/BREED

101 101 101 101 101 101

HIMALAYAN

POINTED SOLID DIVISION

SEAL POINT

1	1	1	1	1	1	102	HISSTORICATS VIENNA	1.0	M	102	1	1	1	1	1	1
							SBV 082709 030 BORN: 08/27/09									
							Radzaczat Bismarck of Hisstoricats									
							Radzaczat Hermione of Hisstoricats									
						NE	B/O: Sue/Christian Cherau			NE						

102 102 102 102 102 102

BEST OF DIVISION

102 102 102 102 102 102

POINTED TORTIE DIVISION

BLUE TORTIE POINT

1	1	1	1	1	1	103	NYMEWS GWYNETH PAWLTR0	1.4	F	103	1	1	1	1	1	1
							SBV 042309 041 BORN: 04/23/09									
							GC NYMews Banyon McDuff									
							CH NYMews Mewdy Blues									
						NE	B/O: S Dockstader			NE						

103 103 103 103 103 103

BEST OF DIVISION

103 103 103 103 103 103

103 103 103 103 103 103

BEST OF BREED

103 103 103 102 103 103

102 102 102 102 102 102

2ND BEST OF BREED

102 102 102 103 102 102

**MAINE COON
TRADITIONAL SOLID DIV**

1	1	1	1	1	1	103A	PETTEYCATS KILIMANJARO	2.4	M	103A	1	1	1	1	1	1
							SBT 042408 033 BORN: 04/24/08									
							CH Petteycats Ice Man Cometh									
							Smoochncoons Cleopatra of Petteycats									
						NE	B/O: Cathy Pettey			NE						

(COLOR CLASS CONTINUED)

**CHAMPIONSHIP
LONGHAIR CATS**

SATURDAY

PB PL RB FH DM RK

SUNDAY

MD PB DB OL ID JR

MAINE COON

TRADITIONAL SOLID DIVISION

BLACK

	104	AMAYALYNX CARBON FTPRINTS OF MTNEST SBT 120309 008 BORN: 12/03/09 LA SGC MTNEST Dark Side O The Moon Tuscaloosa Cruella of Amayalynx B: Katherina Krenn MA O: Judy/David Bernbaum A: McFadden	0.9 F 104 NOV	
--	-----	---	------------------	--

103A 103A 104 104 103A 104
104 104 103A 103A 104 103A

BEST OF DIVISION
2nd Div
TRADITIONAL TABBY DIVISION

104 104 104 104 104 104
103A 103A 103A 103A 103A 103A

BROWN TICKED TABBY

	105	BROADSWAY DAMARISCOTTA SBT 011010 015 BORN: 01/10/10 IW SGC MaineyClassic Rocky of Broadway CH Williamina Chocolate Ripple SE B/O: Jennifer Sable/Jean Thompson	0.8 F 105 NOV	
--	-----	---	------------------	--

RED CLASSIC TABBY

2 2 2 2 A	106	DRACONFLY NEEDAHBAH SBT 100309 006 BORN: 10/03/09 RW SGCCodycats Hendrickson of Dracoonyfly CH Broadway Lady Amherst of Dracoonyfly B: Sharon Stegall NE O: Sharon Stegall/Janet Rosenberg A: Jo-Ann Benedetti	0.11 M 106 NOV	2 2 2 2 2
-------------	-----	--	-------------------	-----------

2	107	ATLASTCATS PUMPKIN SBT 091209 038 BORN: 09/12/09 TGC Howlyn Fargo of Atlascats Broadway Purrnado of Atlascats NE B/O: Marie Harriman & Chris Condon	0.11 M 107 CH	2
---	-----	---	------------------	---

BROWN CLASSIC TORBIE

2 2 3	108	DRACONFLY AIYANA OF BEIGATTI SBT 100209 015 BORN: 10/02/09 SGC RW Codycats Hendrickson of Dracoonyfly CH Dracoonyfly Ally Shrimp B: Sharon Stegall NE O: Jo-Ann Benedetti	0.11 F 108 CH	2 3 2
-----------	-----	--	------------------	-------

(color class continued)

CHAMPIONSHIP LONGHAIR CATS

SATURDAY

PB PL RB FH DM RK

SUNDAY

MD PB DB OL LD JR

(BROWN CLASSIC TORBIE MAINE COON continued)

3 3 3 1 2 3

109 CODYCATS MADELINE OF MAINETALES 7.5 F 109
 SBT 032703 BORN: 03/27/03 RW QGC
 QGC Codycats Sterling Zeus
 Codycats Diamond Roux
 B: Maryrose Sanchez
 NE O: Susan Erikson NE
 A: Lisa Burtsche

3 2 A 3 3 3

BROWN MACKEREL TORBIE

1 2 1 3 1 1

110 ATLASTCATS DUNKIN 0.10 F 110
 SBT 110109 015 BORN: 11/01/09 NOV
 Fogcity Julian McMahon
 Atlascats Gevalia

1 1 1 1 1 1

1 1 2 3 1 2
167 108 107 106 105 108
116B 110 106 107 107 107
108 107 108 109 110B 110

NE B/O: Marie Harriman & Chris Condon NE
 116B SBT 1042207030 3.4 F 116B
 BEST OF DIVISION
 2ND BEST OF DIVISION
 3RD BEST OF DIVISION

1 1 2 2 2
116B 107 107 107 107 106
107 116B 106 108 108 107
108 106 116B 110 105 108

TRADITIONAL SILVER/SMOKE DIVISION

BLACK SMOKE

A A A A A A

111 QUINSIGAMOND TANK OF MAINELYCLASSIC 0.11 M 111
 SBT 100109 022 BORN: 10/01/09 NOV
 MainelyClassic Yuma of Quinsigamond
 Sarajen Sunapee of Quinsigamond
 B: Karen/Rob Fleming
 NE O: Rae Sammis NE
 A: Jean Thompson

A A A A A A

x x x x x x

BEST OF DIVISION

x x x x x x

TRADITIONAL TABBY & WHITE DIVISION

BROWN CLASSIC TABBY & WHITE

3 2 1 1 1 2

112 KELIMCOONS ~~WHITTE~~ ^{WHYDATTIE} 0.8 M 112
 SBT 121509 021 BORN: 12/15/09 NOV
 CH Kelimcoons Dodge Charger
 QGC Kelimcoons Jolt
 NE B/O: Rita/Kim/Kelly Berg NE

1 2 1 1 2 2

(color class continued)

BROWN CLASSIC TORBIE

116B COONIFICENT ODIE COLONIE 3.4 F 116B
 SBT 042207 030 BORN: 04/22/07 RW QGC
 RW SGC Mainelyclassic Fitz of Coonificent
 CH Broadway Annika of Coonificent
 NE B/O: Pat Montanaro NE
 A: Jean Thompson

BROWN CLASSIC TORBIE & WHITE

116A COONIFICENT ADIANNA 0.10 F 116A
 SBT 110409 002 BORN: 11/04/09 CH
 LA SGC Mainelyclassic Night Stalker
 CH Coonoak Zelda of Coonificent
 NE B/O: Pat Montanaro NE
 A: Rae Sammis

CHAMPIONSHIP LONGHAIR CATS

SATURDAY
PB PL RB FH DM RK

SUNDAY
MD PB DB OL LD JR

(BROWN CLASSIC TABBY & WHITEMAINE COON continued)

<u>2</u>	<u>1</u>	<u>2</u>	<u>2</u>	<u>2</u>	<u>1</u>	113 KELIMCOONS STORM TROOPER SBT 121509 020 BORN: 12/15/09 CH Kelimcoons Dodge Charger QGC Kelimcoons Jolt NE B/O: Rita/Kim/Kelly Berg	0.8 M 113 NOV NE	<u>2</u>	<u>1</u>	<u>2</u>	<u>2</u>	<u>1</u>	<u>1</u>
<u>1</u>	<u>3</u>	<u>3</u>	<u>3</u>	<u>3</u>	<u>3</u>	114 SHARMANI YANKEEROSE OF KATZAPURRIN SBT 102508 020 BORN: 10/25/08 RW GC Flitten's Gryphon Sharmani Georgy Girl B: Sharon/Manny Strauch NE O: Lisa Burtsche A: Susan Erikson	1.10 F 114 NOV NE	<u>3</u>	<u>3</u>	<u>3</u>	<u>3</u>	<u>3</u>	<u>3</u>

RED TICKED TABBY & WHITE

<u>1</u>	<u>1</u>	<u>1</u>	<u>1</u>	<u>1</u>	<u>1</u>	115 COONIFICENT COACH SBT 072909 018 BORN: 07/28/09 LA SGC MainelyClassic Night Stalker RW CH Coonificent Pomarancza B/O: Pat Montanaro	1.1 M 115 QGC	<u>1</u>	<u>1</u>	<u>1</u>	<u>1</u>	<u>1</u>	<u>1</u>
----------	----------	----------	----------	----------	----------	---	------------------	----------	----------	----------	----------	----------	----------

BROWN CLASSIC TORBIE & WHITE

<u>1</u>	<u>A</u>	<u>A</u>	<u>A</u>	<u>A</u>	<u>1</u>	116 HOLLISHILL EVANGELINE OF KELIMCOONS SBT 060707 022 BORN: 06/07/07 Cabincoon Quintus Arrius Hollishill Cosette B: Joanne Ezepek NE O: Rita/Kim/Kelly Berg	3.3 F 116 DGC NE	<u>A</u>	<u>A</u>	<u>A</u>	<u>A</u>	<u>A</u>	<u>A</u>
<u>115</u>	<u>113</u>	<u>115</u>	<u>112</u>	<u>112</u>	<u>115</u>	116A SBT 110409 002 0.10 F BEST OF DIV 2nd OF DIV 3rd OF DIV	116A	<u>A</u>	<u>A</u>	<u>A</u>	<u>A</u>	<u>A</u>	<u>A</u>
<u>114</u>	<u>115</u>	<u>112</u>	<u>113</u>	<u>115</u>	<u>113</u>			<u>115</u>	<u>113</u>	<u>112</u>	<u>112</u>	<u>115</u>	<u>113</u>
<u>113</u>	<u>112</u>	<u>113</u>	<u>113</u>	<u>113</u>	<u>112</u>			<u>112</u>	<u>113</u>	<u>113</u>	<u>113</u>	<u>112</u>	<u>112</u>

TRADITIONAL SILVER/SMOKE & WHITE DIVISION

BLACK SILVER TICKED TABBY & WHITE

<u>1</u>	<u>1</u>	<u>1</u>	<u>1</u>	<u>1</u>	<u>1</u>	117 MTNEST LIEUTENANT PYRENE SBT 082009 015 BORN: 08/20/09 IW CH Mainette Philosopher's Stone Noracoon Tailor Teagarden of MTNEST MA B/O: Judy/David Bernbaum A: McFadden	1.0 M 117 RW SGC MA	<u>1</u>	<u>1</u>	<u>1</u>	<u>1</u>	<u>1</u>	<u>1</u>
<u>117</u>	<u>117</u>	<u>117</u>	<u>117</u>	<u>117</u>	<u>117</u>	BEST OF DIVISION		<u>117</u>	<u>117</u>	<u>117</u>	<u>117</u>	<u>117</u>	<u>117</u>
<u>115</u>	<u>113</u>	<u>115</u>	<u>112</u>	<u>112</u>	<u>117</u>	BEST OF BREED		<u>115</u>	<u>115</u>	<u>117</u>	<u>112</u>	<u>115</u>	<u>117</u>
<u>107</u>	<u>104</u>	<u>117</u>	<u>113</u>	<u>115</u>	<u>115</u>	2ND BEST OF BREED		<u>117</u>	<u>117</u>	<u>112</u>	<u>117</u>	<u>117</u>	<u>115</u>
<u>117</u>	<u>115</u>	<u>112</u>	<u>115</u>	<u>103</u>	<u>113</u>	3RD BEST OF BREED		<u>112</u>	<u>113</u>	<u>115</u>	<u>104</u>	<u>107</u>	<u>104</u>

**CHAMPIONSHIP
LONGHAIR CATS**

SATURDAY

PB PL RB FH DM RK

SUNDAY

MD PB DB OL LD JR

NORWEGIAN FOREST

TRADITIONAL SOLID DIVISION

BLACK

	118 SWEETWOOD BEBE BILLY SBT 120409 017 BORN: 12/04/09 CH Morgan av Skara Brae of Finnishline CH Quinsigamond Rosa of Sweetwood NE B/O: Lorraine Vavra	0.9 F 118 NOV NE	
--	--	------------------------	--

118 119 119 118 118 119

BEST OF DIVISION

118 119 118 118 119 118

TRADITIONAL TABBY & WHITE DIVISION

BLUE CLASSIC TABBY & WHITE

	119 MAR'MICHEL'S NEW CASTLE/FI SBT 110709 010 BORN: 11/07/09 S*Icewoods Cherokee S*Sherwoodkogen Florida JW B: Marika Soreskog NE O: Lorraine Vavra	0.10 M 119 QGC NE	
--	--	-------------------------	--

CREAM CLASSIC TABBY & WHITE

	120 INTO WISHIN INGE SBT 032108 014 BORN: 03/21/08 IW SGC 05 S*Aristo Limaz Chief Nacona RW SGC Hanneav Boxerhaven B: Melissa Alexander NE O: Melissa & George Alexander	2.5 F 120 SGC NE	
--	---	------------------------	--

120 119 120 120 119 119
119 120 119 119 120 120

BEST OF DIVISION
2ND BEST OF DIVISION

120 119 119 119 120 119
119 120 120 120 119 120

120 119 120 120 119 119
119 120 119 119 120 120
118 118 118 118 118 118

BEST OF BREED
2ND BEST OF BREED
3RD BEST OF BREED

120 119 119 119 120 119
119 120 120 120 119 120
118 118 118 118 118 118

**CHAMPIONSHIP
LONGHAIR CATS**

SATURDAY
PB PL RB FH DM RK

SUNDAY
MD PB DB OL LD JR

PERSIAN

TRADITIONAL TORTIE & WHITE DIVISION

BLACK TORTIE & WHITE

<u>1</u>	<u>1</u>	<u>1</u>	<u>1</u>	<u>1</u>	<u>1</u>	121	BERRYHILLE SAND PEBBLES OF TINAZ SBV 072009 010 BORN: 07/20/09 IW Berryhille Blast Off Berryhille Bubbles B: Mary Krause MA 0: Christina Baumer & Mary Krause	1.1 F 121 QGC MA	<u>1</u>	<u>1</u>	<u>1</u>	<u>1</u>	<u>1</u>	<u>1</u>
<u>121</u>	<u>121</u>	<u>121</u>	<u>121</u>	<u>121</u>	<u>121</u>		BEST OF DIVISION/BREED		<u>121</u>	<u>121</u>	<u>121</u>	<u>121</u>	<u>121</u>	<u>121</u>

RAGDOLL

POINTED SOLID & WHITE DIVISION

SEAL POINT MITTED

<u>1</u>	<u>1</u>	<u>1</u>	<u>1</u>	<u>1</u>	<u>1</u>	122	HUGARAGDOLL JASPER'S WIND WHISPER SBT 101909 018 BORN: 10/19/09 QGC Showdolls Rumble in the Bronx GC Hugaragdoll Tuckleberry B: Alexandra Marinets NE 0: Sandy Wooster	0.10 M 122 NOV NE	<u>1</u>	<u>1</u>	<u>1</u>	<u>1</u>	<u>1</u>	<u>1</u>
<u>A</u>	<u>A</u>	<u>A</u>	<u>A</u>	<u>A</u>	<u>Z</u>	123	WILLOWTREERAGS BELLEVUE MIRAMAR SBT 101609 025 BORN: 10/16/09 RW SGC WillowTreeRags Apollo Amadeo IowasBestRags Holly of WillowTreeRags NE B/O: Mable Roberts	0.10 F 123 NOV NE	<u>A</u>	<u>A</u>	<u>A</u>	<u>A</u>	<u>A</u>	<u>A</u>

SEAL POINT BI-COLOR

<u>3</u>	<u>2</u>	<u>2</u>	<u>1</u>	<u>2</u>	<u>1</u>	124	WILLOWTREERAGS GENEVIEVE HANS DATTER SBT 101209 012 BORN: 10/12/09 TGC WillowTreeRags Hans Donsen Mendelian Geneva of WillowTreeRags NE B/O: Mable Roberts	0.10 F 124 TGC NE	<u>2</u>	<u>2</u>	<u>3</u>	<u>1</u>	<u>1</u>	<u>1</u>
<u>1</u>	<u>1</u>	<u>1</u>	<u>2</u>	<u>3</u>	<u>2</u>	125	WILLOWTREERAGS PETER PAN SBT 101209 028 BORN: 10/12/09 TGC WillowTreeRags Hans Donsen Mendelian Geneva of WillowTreeRags NE B/O: Mable Roberts	0.10 M 125 NOV NE	<u>1</u>	<u>3</u>	<u>1</u>	<u>2</u>	<u>3</u>	<u>2</u>

(color class continued)

**CHAMPIONSHIP
LONGHAIR CATS**

SATURDAY
PB PL RB FH DM RK

SUNDAY
MD PB DB OL LD JR

(SEAL POINT BI-COLOR RAGDOLL continued)

2 3 3 3 1 3

126 SUNNYBROOK ROMEO
SBT 041506 040 BORN: 04/15/06
Buxtonsgardoo Mocha Madness
Buxtonsgardoo Ellamae
NE B/O: Denise Celona

4.4 M 126
QGC
NE

3 1 2 3 2 3

BLUE POINT MITTED

1 1 1 1 1 1

127 RAGANGELS HARMONY OF VERITASDOLLS
SBT 061509 010 BORN: 06/15/09
Cadbury of Sunnybrook
DGC RagAngels Ms. Muffin
B: Sandy Wooster
NE O: Suzanne Philbrick

1.2 F 127
CH
NE

1 1 1 1 1 1

BLUE POINT BI-COLOR

2 2 2 2 1 3

128 RAGANGELS MS DOLLY MAE
SBT 092809 012 BORN: 09/28/09
QGC SunnyBrook Romeo
CH RagAngels Ms Daisy Mae
NE B/O: Sandy Wooster

0.11 F 128
NOV
NE

2 2 3 3 4 1

3 3 3 3 3 1

129 WILLOWTREERAGS CLAUD HANSEN
SBT 070108 007 BORN: 07/01/08
TGC WillowTreeRags Hans Donsen
SerenityRags Savannahs Dream
NE B/O: Mable Roberts

2.2 M 129
RW QGC
NE

3 3 2 2 3 3

1 1 1 1 4 2

130 DONNASDOLLYS MAXIMILIAN
SBT 041309 011 BORN: 04/13/09
RW SGC Luvéz Knight Ryder of Donnasdollys
Donnasdollys Diamond Tiara
B: Donna Ciple
NE O: Lisa Sullo

1.4 M 130
RW QGC
NE

1 1 1 1 1 2

4 4 4 4 2 4

131 DOLLHOUSE SKYDANCER OF VERITASDOLLS
SBT 082808 055 BORN: 08/28/08
Dollhouse Bruno Magli
Dollhouse Paris Tilton
B: JaNeil Cillessen
NE O: Suzanne Philbrick

2.0 F 131
TGC
NE

4 4 4 4 2 4

130 125 130 122 126 129
122 130 128 124 128 130
125 128 122 130 124 122

BEST OF DIVISION
2ND BEST OF DIVISION
3RD BEST OF DIVISION

122 122 130 124 130 128
130 130 122 130 124 130
125 126 125 125 122 129

CHAMPIONSHIP LONGHAIR CATS

SATURDAY

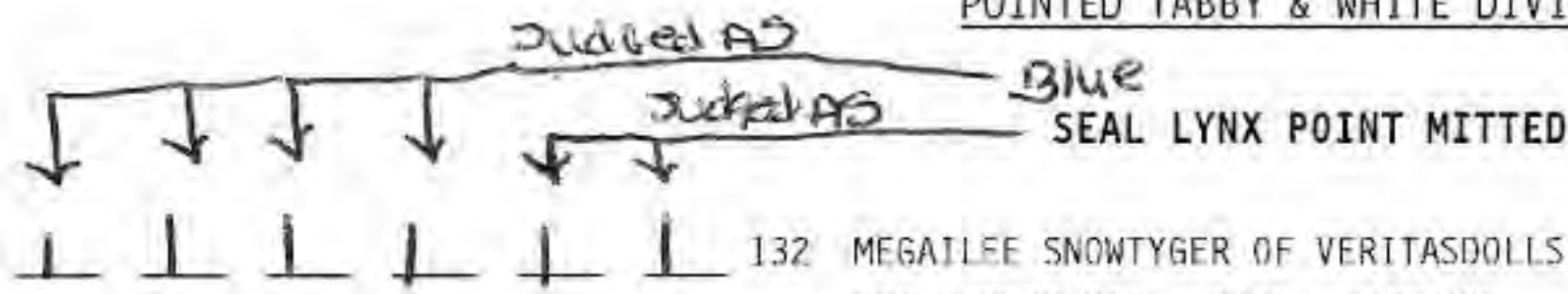
PB PL RB FH DM RK

SUNDAY

MD PB DB OL LD JR

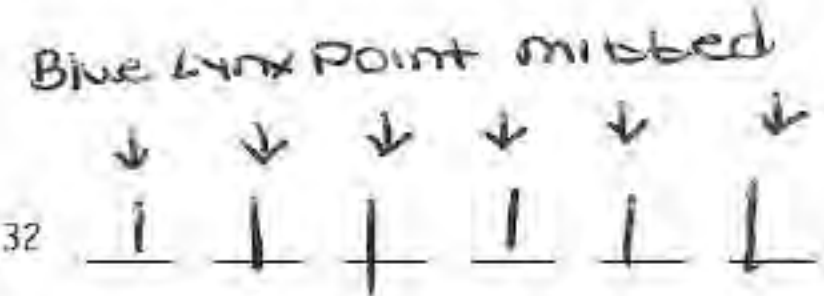
(RAGDOLL continued)

POINTED TABBY & WHITE DIVISION



132 MEGAILEE SNOWTYGER OF VERITASDOLLS
 SBT 082809 010 BORN: 08/28/09
 Clarkstonrags Maxwell Rockstar
 CajunRagdolls Dolly of Megailee
 B: Gail Stone
 NE O: Suzanne Philbrick

1.0 M 132
 NOV



NE

132 132 132 132 132 132

BEST OF DIVISION

132 132 132 132 132 132

130 125 130 122 126 129

BEST OF BREED

122 122 130 124 130 128

122 120 128 124 126 130

2ND BEST OF BREED

130 130 122 130 124 130

125 128 122 130 124 122

3RD BEST OF BREED

125 126 125 125 122 129

SIBERIAN

TRADITIONAL SILVER/SMOKE & WHITE DIVISION

BLACK SILVER CLASSIC TABBY & WHITE

A A A A A A

133 DREAKO IZZY
 SBT 021009 052 BORN: 02/10/09
 Purrshka Ivanivich of Dreako
 Cooncreole Eva
 B: Ksenia and Deborah McKenzie
 MA O: Anastasia Svetlana McKenzie

1.7 M 133
 NOV

A A A A A A

MA

X X X X X X

BEST OF DIVISION/BREED

X X X X X X

**CHAMPIONSHIP
SHORTHAIK CATS**

SATURDAY
PB PL RB FH DM RK

SUNDAY
MD PB DB OL LD JR

AMERICAN SHORTHAIK

TRADITIONAL TABBY & WHITE DIVISION

BROWN CLASSIC TABBY & WHITE

<p><u>1</u> <u>1</u> <u>1</u> <u>1</u> <u>1</u> <u>1</u> 201</p> <p><u>201</u> <u>201</u> <u>201</u> <u>201</u> <u>201</u> <u>201</u></p>	<p>BEAUCHADOR PAINT BOX SBV 052809 005 BORN: 05/28/09 RW QGC Beauchador Silver Star Beauchador Countess NE B/O: Andre Grenier</p>	<p>1.3 M 201</p> <p>RW QGC</p> <p>NE</p>	<p><u>1</u> <u>1</u> <u>1</u> <u>1</u> <u>1</u> <u>1</u></p> <p><u>201</u> <u>201</u> <u>201</u> <u>201</u> <u>201</u> <u>201</u></p>
---	---	--	---

BEST OF DIVISION/BREED

BENGAL

TRADITIONAL TABBY DIVISION

BROWN SPOTTED TABBY

<p><u>1</u> <u>1</u> <u>1</u> <u>1</u> <u>2</u> <u>1</u> 202</p> <p><u>2</u> <u>2</u> <u>2</u> <u>2</u> <u>1</u> <u>2</u></p>	<p>NAHANNI AMERICAN GANGSTA SBT 053009 023 BORN: 05/30/09 RW SGC Cukkiia King Remeses of Nahanni Nahanni Bella Bianca B: Michele Alexion NE O: Heidi LePage</p>	<p>1.3 M 202</p> <p>RW QGC</p> <p>NE</p>	<p><u>1</u> <u>2</u> <u>1</u> <u>1</u> <u>1</u> <u>1</u></p> <p><u>2</u> <u>1</u> <u>2</u> <u>2</u> <u>2</u> <u>2</u></p>
<p><u>A</u> <u>A</u> <u>A</u> <u>A</u> <u>A</u> <u>A</u> 204</p>	<p>ANJOU HER ROYAL SHYNESS MADELINE SBT 081109 003 BORN: 08/11/09 Legacie Oh Henri of Anjou CH Gogees Olivia Enchants of Anjou MA B/O: Victoria Jeffers</p>	<p>1.1 F 204</p> <p>NOV</p> <p>MA</p>	<p><u>A</u> <u>A</u> <u>A</u> <u>A</u> <u>A</u> <u>A</u></p>

BROWN MARBLED TABBY

<p><u>A</u> <u>A</u> <u>A</u> <u>A</u> <u>A</u> <u>A</u> 205</p> <p><u>202</u> <u>202</u> <u>202</u> <u>202</u> <u>203</u> <u>202</u></p> <p><u>203</u> <u>203</u> <u>203</u> <u>203</u> <u>202</u> <u>203</u></p> <p><u>+</u> <u>+</u> <u>+</u> <u>X</u> <u>+</u> <u>+</u></p>	<p>JAZZLE LITTLE COBRA OF SANOWTUNDRA SBI 082009 019 BORN: 08/20/09 Kingsmark Zoolander of Jazzle Jazzie Twinkle Twinkle Little Star B: Paula Elson NE O: Hermina and Peter Hart</p>	<p>1.0 F 205</p> <p>NOV</p> <p>NE</p>	<p><u>A</u> <u>A</u> <u>A</u> <u>A</u> <u>A</u> <u>A</u></p> <p><u>202</u> <u>203</u> <u>202</u> <u>202</u> <u>202</u> <u>202</u></p> <p><u>203</u> <u>202</u> <u>203</u> <u>203</u> <u>203</u> <u>203</u></p> <p><u>X</u> <u>+</u> <u>X</u> <u>A</u> <u>A</u> <u>X</u></p>
---	--	---------------------------------------	---

BEST OF DIVISION
2ND BEST OF DIVISION
3RD BEST OF DIVISION

CHAMPIONSHIP SHORTHAIK CATS

SATURDAY

PB PL RB FH DM RK

SUNDAY

MD PB DB OL LD JR

(BENGAL continued)

TRADITIONAL SILVER/SMOKE DIVISION

BLACK SILVER SPOTTED TABBY

<p><u>1</u> <u>2</u> <u>1</u> <u>1</u> <u>2</u> <u>2</u></p>	<p>206 COZYCOUNTRY AMERICAS NEXT TOP MODEL 0.9 F 206 SBT 121009 037 BORN: 12/10/09 NOV RW SGC Cozy Country Friday Night Lights RW QGC Boulderridge 2 Hot 2 Handle NE B/O: Heidi LePage</p>	<p><u>1</u> <u>1</u> <u>2</u> <u>1</u> <u>2</u> <u>1</u></p>	
--	--	--	--

<p><u>1</u> <u>1</u> <u>2</u> <u>2</u> <u>1</u> <u>1</u></p>	<p>207 SILVERBELLE OF BENGALAND 0.9 F 207 SBT 111909 002 BORN: 11/19/09 CH Junglemist Comin Attrakton of Medoz CH Trendar Stormi Cloud B: Trina A Lally MA O: Hugh/Peggy Price A: Donna Syverson</p>	<p><u>2</u> <u>2</u> <u>1</u> <u>2</u> <u>1</u> <u>2</u></p>	
--	--	--	--

206 207 206 206 207 207
207 206 207 207 206 206

BEST OF DIVISION
2ND BEST OF DIVISION

206 206 207 206 207 206
207 207 206 207 206 207

POINTED TABBY DIVISION

SEAL SPOTTED LYNX POINT

<p><u>1</u> <u>1</u> <u>1</u> <u>1</u> <u>1</u> <u>1</u></p>	<p>208 SNOWTUNDRA LITTLE CAESAR 1.8 M 208 SBT 121208 019 BORN: 12/12/08 QGC IW SGC Junglemist Creme Donut of Bengalnd CH Bengalnd Gingerbread of SnowTundra NE B/O: Hermina and Peter Hart</p>	<p><u>1</u> <u>1</u> <u>1</u> <u>1</u> <u>1</u> <u>1</u></p>	
--	--	--	--

208 208 208 208 208 208

BEST OF DIVISION

208 208 208 208 208 208

202 207 202 207 202 202
203 202 203 203 205 207
208 206 208 208 208 208

BEST OF BREED
2ND BEST OF BREED
3RD BEST OF BREED

202 203 202 202 202 206
203 202 203 206 208 202
206 206 207 203 207 208

BOMBAY

TRADITIONAL SOLID DIVISION

BLACK

<p><u>2</u> <u>2</u> <u>2</u> <u>2</u> <u>2</u> <u>2</u></p>	<p>209 BURMARA FATA MORGANA 0.8 F 209 SBV 010210 008 BORN: 01/02/10 NOV IW SGC Rickats Jack Trickortreat Blacpuri Jade of Burmara B: Barbara Garneau-Jean Campeau NE O: V Korotaev-E Korotaeva A: Barbara Garneau</p>	<p><u>2</u> <u>2</u> <u>2</u> <u>2</u> <u>2</u> <u>2</u></p>	
--	---	--	--

(color class continued)

**CHAMPIONSHIP
SHORTHAIK CATS**

SATURDAY
PB PL RB FH DM RK

SUNDAY
MD PB DB OL LO JR

(BLACK BOMBAY continued)

1 1 1 1 1 1

210 BURMARA BACK IN BLACK OF LUVPURRS
SBV 042609 015 BORN: 04/26/09
IW SGC Rickats Jack Trickortreat
Blacpuri Hade of Burmara
B: Barbara Garneau/D Hetherington
GL O: Chris Unangst/Vanadis Crawford

1.4 M 210
TGC

1 1 1 1 1 1

210 210 210 210 210 210
209 209 209 209 209 209

BEST OF DIVISION/BREED
2ND BEST OF DIVISION/BREED

210 210 210 210 210 210
209 209 209 209 209 209

BURMESE

SEPIA SOLID DIVISION

SABLE

1 1 1 1 1 1

211 WHIPPET OF BURMARA
SBT 101908 045 BORN: 10/19/08
Moravanka Mr Midnight
Moravanka Betty Boop
B: Johanne Maheux-Josée Sicotte
NE O: Barbara Garneau

1.10 M 211
DGC

1 1 1 1 1 1

211 211 211 211 211 211

BEST OF DIVISION/BREED

211 211 211 211 211 211

EGYPTIAN MAU

TRADITIONAL SILVER/SMOKE DIVISION

BLACK SILVER SPOTTED TABBY

1 1 1 1 1 1

212 ARIETTA MAHABBAH AMTAL
SBT 090409 015 BORN: 09/04/09
Arietta Alidu Kalila
RW QGC Arietta Namira Isis
MA B/O: Evelyn Grado-Wolynies
A: Claire Turner

1.0 M 212
RW TGC

1 1 1 1 1 1

212 212 212 212 212 212

BEST OF DIVISION/BREED

212 212 212 212 212 212

**CHAMPIONSHIP
SHORTHAIR CATS**

SATURDAY

PB PL RB FH DM RK

SUNDAY

MD PB DB OL LD JR

EXOTIC SHORTHAIR

TRADITIONAL TABBY DIVISION

CREAM CLASSIC TABBY

1 1 1 1 1 1

213 BEAUCHADOR MES AIEUX
SBV 032608 056 BORN: 03/26/08
Catta Lupin
Beauchador Meme
NE B/O: Andre Grenier

2.5 M 213
RW NOV

1 1 1 1 1 1

213 213 213 213 213 213

BEST OF DIVISION/BREED

213 213 213 213 213 213

SIAMESE

POINTED SOLID DIVISION

CHOCOLATE POINT

1 1 1 1 1 1

214 ABHA BROWNSUGARKISS OF MINGHOU/CF
SBT 072409 049 BORN: 07/24/09
Bel Canto Reveille of Shboi
GC Minghou Chloe's Choice
B: Carole Pulkowski/Pat Muise
SC O: Pat - G Muise/Penny Garrett

1.1 F 214
GC

1 1 1 1 1 1

214 214 214 214 214 214

BEST OF DIVISION/BREED

214 214 214 214 214 214

SPHYNX

POINTED SOLID DIVISION

RED POINT

1 1 1 1 1 1

215 OPUSONE BUCK OWENS OF CLASSICALCATS
SBT 120109 BORN: 12/01/09
RW SGC Classicalcats Fiero
Classicalcats Mystic of Opus One
B: Martine Lavoie
NE O: Jack & Phyllis
A: M Keith/C Wolfe

0.9 M 215
NOV

A A A A A A

215 215 215 215 215 215

BEST OF DIVISION/BREED

X X X X X ✓

CHAMPIONSHIP
SHORTHAIK CATS

SATURDAY

PB PL RB FH DM RK

SUNDAY

MD PB DB OL LD DR

TONKINESE

MINK SOLID DIVISION

LILAC MINK

1 1 1 1 1 1

216 LUVPURRS DREAM WEAVER 1.0 M 216
SBT 081909 017 BORN: 08/19/09 RW SGC
OS IW SGC SazikatZ Ring in the New Year
SazikatZ Sweet Dreams of Luvpurrs
B: Vanadis Crawford/Chris Unangst
SE O: Vanadis Crawford

1 1 1 1 1 1

216 216 216 216 216 216

BEST OF DIVISION/BREED

216 216 216 216 216 216

**CHAMPIONSHIP
LONGHAIR ALTERS**

SATURDAY

PB PL RB FH DM RK

SUNDAY

MD PB DB DL LD JR

BIRMAN

POINTED SOLID & WHITE DIVISION

BLUE POINT GLOVED

 | | | | | |

301 LLOYAL BAILLY
SBT 050904 002 BORN: 05/09/04
RW SGC Loyal Wellesly
Myapogee Xallyna of Loyal
B: Clayton and Pat Lloyd
MA O: Catherine Luckstone

6.4 N 301
RW SGCA

 A A | | A |

301 301 301 301 301 301

BEST OF DIVISION/BREED

 X X 301 301 X 301

HIMALAYAN

POINTED TABBY DIVISION

BLUE LYNX POINT

 | | | | | |

302 JOEDEAN'S LURLINE
SBT 051505 057 BORN: 05/15/05
Joedean Lucky Stripes
Demiana Embraceable You of Joedean
B: R.Pinder-J.Sciurillo-B.Eckerle
NE O: Al and Val Judson

5.3 S 302
QGCA

 | | | | | |

303 303 303 303 303 303
 + + + + + +

BEST OF DIVISION/BREED
2ND BEST OF DIVISION/BREED

 A A A A A A

302 302 302 302 302 302
 X + X X X X

MAINE COON

TRADITIONAL TABBY DIVISION

BROWN CLASSIC TABBY

 | | | | | |

304 CALABASH OZZIE OF KATZAPURRIN
SBT 111407 008 BORN: 11/14/07
TGC Howlyn Fargo of AtLastCats
Calabash Calpernia of Dracoofly
B: Peter and Mary Braun
NE O: Lisa Burtsche
A: Susan Erikson

2.9 N 304
QGCA

 | | | | | |

**CHAMPIONSHIP
LONGHAIR ALTERS**

SATURDAY
PB PL RD FH DM RK

SUNDAY
MD PB DB OL LD JR

(MAINE COON continued)

RED TICKED TABBY

1 1 1 1 1 1

305 BROADSWAY REDDING 6.7 N 305
SBT 020904 027 BORN: 02/09/04 IW OS SGC
SGC Kelleycat Cassidy of Broadsway
Cloistercoon Lullaby of Broadsway
SE B/O: Jennifer Sable/Jean Thompson SE

1 1 1 1 1 1

305 305 304 305 305 305
304 304 305 304 304 304

BEST OF DIVISION
2ND BEST OF DIVISION

305 305 304 305 304 304
304 304 305 304 305 305

TRADITIONAL TABBY & WHITE DIVISION

BROWN TICKED TABBY & WHITE

1 1 1 1 1 1

306 MAINEVU BECK 0.10 N 306
SBT 110509 011 BORN: 11/05/09 QGCA
IW SGC Koontucky Kactus Jack of MaineVu
Dracoofly Calamity Jane of MaineVu
B: Marjorie & Phil Berger
MA Q: Monique and Josh Lewis MA

1 1 1 1 1 1

RED CLASSIC TABBY & WHITE

1 1 1 1 1 1

307 WIDOWSWALK BUTTERSCOTCH 3.2 S 307
SBT 062507 063 BORN: 06/25/07 CHA
Widowswalk Jameson
Widowswalk Hocus Pocus
B: Jackie Cormeir
NE Q: Nancy D'Abrosca NE

1 1 1 1 1 1

306 306 306 306 306 306
307 307 307 307 307 307

BEST OF DIVISION
2ND BEST OF DIVISION

306 306 306 306 306 306
307 307 307 307 307 307

TRADITIONAL SILVER/SMOKE & WHITE DIVISION

BLACK SILVER CLASSIC TABBY & WHITE

1 1 1 1 1 1

308 COONIFICENT KUMI 1.1 N 308
SBT 072209 021 BORN: 07/22/09 RW SGCA
IW SGC Blazinarrow Paco of Coonificent
RW QGC Coonificent Odie Colonie
B: Pat Montanaro
MA Q: Lori Tompkins MA

1 1 1 1 1 1

308 308 308 308 308 308
308 306 306 308 305 306
306 308 308 305 306 305
305 307 307 306 304 308

BEST OF DIVISION

BEST OF BREED
2ND BEST OF BREED
3RD BEST OF BREED

308 308 308 308 308 308
306 308 306 306 306 304
305 306 308 308 304 306
305 305 304 307 308 307

**CHAMPIONSHIP
LONGHAIR ALTERS**

SATURDAY

PB PL RB FH DM RK

SUNDAY

MD PB DB OL LD JR

NORWEGIAN FOREST

TRADITIONAL SOLID DIVISION

WHITE

1 1 1 1 1 1

309 PLANET FUNK BLUE TANIS
SBT 060807 020 BORN: 06/08/07
I*Lux Felina Maxenthus
Nirvana Blue Tanis
B: Nelly Bozzoli
NE O: Melissa Alexander

3.3 N 309
LA SGC

1 1 A 1 1 1

309 309 309 309 309 309

BEST OF DIVISION

309 309 X 309 309 309

TRADITIONAL TABBY & WHITE DIVISION

BROWN MACKEREL TABBY & WHITE

1 1 1 1 1 1

310 INTOWISHIN WILHELM
SBT 081408 019 BORN: 08/14/08
RW SGC Oropax Am Baerenbach
Epona Karina of Intowishin
B: Melissa Alexander
NE O: Janice Sohigian

2.0 N 310
SGCA

1 1 1 1 1 1

310 310 310 310 310 310

BEST OF DIVISION

310 310 310 310 310 310

309 310 309 310 309 310
310 309 310 309 310 309

BEST OF BREED
2ND BEST OF BREED

309 309 310 309 309 310
310 310 X 310 310 309

PERSIAN

TRADITIONAL TABBY DIVISION

LILAC MACKEREL TABBY

1 1 1 1 1 1

311 FELIVAL JOHN J TRAVOLTA
SBV 042609 029 BORN: 04/26/09
Tracylooe Rolex of Felival
Felival Choco Sweet Love
B: France Cote
NE O: Rosemary Valladares

1.4 N 311
NOV

A A A A A A

**CHAMPIONSHIP
LONGHAIR ALTERS**

SATURDAY

PB PL RB FH DM RK

SUNDAY

MD PB DB OL LD JR

(PERSIAN continued)

RED CLASSIC TABBY

1 1 1 1 1 1

312 RADZACATZ AODHAN WEASLEY OF OMORDHA 3.0 N 312
SBV 081507 032 BORN: 08/15/07 RW QGC
TNT Puffs Zorro of Radzacatz
Radzacatz Paris
B: Ellie and Amber Radzevich
NE Q: Siobhan Moore

1 1 1 1 1 1

311 312 312 312 311 312
312 311 311 311 312 311

BEST OF DIVISION
2ND BEST OF DIVISION

312 312 312 312 312 312
X X X X X X

TRADITIONAL TORTIE & WHITE DIVISION

BLACK TORTIE & WHITE

A A A A A A

313 JOYVILLE CAOIMHE OF OMORDHA 4.2 S 313
SBT 062806 025 BORN: 06/28/06 RW SGCA
Joyville Flash Gordon
Joyville Oh Lucy!
B: Pauline Joy
NE Q: Siobhan Moore

A A A A A A

X X X X X X

BEST OF DIVISION

X X X X X X

311 312 312 312 311 312
312 311 311 311 312 311
X X X X X X

BEST OF BREED
2ND BEST OF BREED
3RD BEST OF BREED

312 312 312 312 312 312
X X X X X X
X X X X X X

**CHAMPIONSHIP
SHORTHAIK ALTERS**

SATURDAY
PB PL RB FH DM RK

SUNDAY
MD PB DB OL LD JR

ABYSSINIAN

TRADITIONAL TABBY DIVISION

RUDDY TICKED TABBY

1 1 1 1 1 PO

351 PENTACLECATS SUMMER SOLSTICE 2.2 S 351
SBT 062008 001 BORN: 06/20/08 TGC
RW SGC Tigerflower Magicat of Pentaclecats
TGC Aradia Moonstone of Pentaclecats
B: Rene Knapp
NE O: Robert Vizziello

1 1 1 1 1 1

351 351 351 351 351 X

BEST OF DIVISION/BREED

351 351 351 351 351 351

AMERICAN SHORTHAIK

TRADITIONAL TABBY & WHITE DIVISION

BROWN CLASSIC TABBY & WHITE

1 1 1 1 1 1

352 BEAUCHADOR BEARONESS 8.8 S 352
SBT 121201 017 BORN: 12/12/01 RW SGCA
RW GC Miribu's Polar Bear of Beauchador
GC Miribu's Holly Go Lightly
B: Andre Grenier & Margot Mellies
NE O: Andre Grenier

1 1 1 1 1 1

352 352 352 352 352 352

BEST OF DIVISION/BREED

352 352 352 352 352 352

BENGAL

TRADITIONAL TABBY DIVISION

BROWN SPOTTED TABBY

1 3 1 2 1 1

353 COZY COUNTRY MR. SILLY PUDDY 2.8 N 353
SBT 010308 028 BORN: 01/03/08 QGCA
RW SGC Mistycove Sweet James of Cozy Country
Boulderridge She's Got Style of Cozy Country
B: Heidi LePage
NE O: Donna O'Shea

3 2 2 2 4 3

4 1 2 3 4 4

354 SPEAKEASY FOOTPRINTS IN THE SAND 1.11 N 354
SBT 091708 030 BORN: 09/17/08 RW SGCA
QGC Junglectatz Sorcerer's Apprentice
CH Speakeasy Pussy Galore
B: Chris and Gary Jacobson
NE O: Wendy Garcia

1 4 1 1 1 4

(color class continued)

CHAMPIONSHIP SHORTHAIR ALTERS

SATURDAY

PB PL RB FH DM RK

SUNDAY

MD PB DB OL LD JR

(BROWN SPOTTED TABBY BENGAL continued)

3 2 3 1 2 2

355 JUNGLETALES SIMPLY DASHING 2.5 N 355
SBT 040508 017 BORN: 04/05/08 SGCA
RW SGC Jungletales Beau Thai
CH Silvergene Sparkles of Jungletales
B: Peter Perez
NE O: Wendy Garcia

4 3 4 4 3 1

2 4 4 4 3 3

356 LAWNTONSTMEWS TATTLE TAIL 0.11 N 356
SBT 092909 011 BORN: 09/29/09 DGCA
CH Lawntonstmews Devils Waltz
Nodngait Something Else
B: Marilyn Saserko
MA O: Sherri/Samantha Mcconnell

2 1 3 3 2 2

BROWN MARBLED TABBY

1 1 1 1 1 1

357 COZY COUNTRY MY SWEETSNICKERDOODLES 2.8 N 357
SBT 010308 027 BORN: 01/03/08 RW SGCA
RW SGC Mistycove Sweet James of Cozy Country
Boulderridge She's Got Style of Cozy Country
B: Heidi LePage
NE O: Donna O'Shea

1 1 1 1 1 1

351 351 353 355 353 353
353 354 354 351 351 351
356 355 355 353 353 355

BEST OF DIVISION
2ND BEST OF DIVISION
3RD BEST OF DIVISION

351 356 354 354 354 357
356 353 353 353 351 355
357 355 356 356 356 356

TRADITIONAL SILVER/SMOKE DIVISION

BLACK SILVER MARBLED TABBY

1 1 1 1 1 1

358 COZY COUNTRY MIDNIGHT RIDER 1.4 N 358
SBT 050309 005 BORN: 05/03/09 DGCA
RW SGC Cozy Country Friday Night Lights
Boulderridge She's Got Style of Cozy Country
B: Heidi LePage
NE O: Donna O'Shea

1 1 1 1 1 1

356 356 358 356 358 358
357 351 353 355 353 353
353 354 354 351 351 351
356 358 355 353 355 355

BEST OF DIVISION
BEST OF BREED
2ND BEST OF BREED
3RD BEST OF BREED

358 358 358 358 358 358
354 356 354 354 354 357
356 353 353 358 351 358
358 353 356 353 356 355

POINTED TABBY DIV-SEAL SP LYNX POINT

A A A A A A

358A BENGALAND STARSFFIRE OF SNOWTUNDRA 4.4 S 358A
SBT 041806 025 BORN: 04/16/06 QGCA
DGC Bengalnd Sir Sno Zees Legacy
Medoz Artic Exhibit of Bengalnd
B: Hugh/Peggy/Lori Ann Price
NE O: Hermina/Peter Hart

A A A A A A

X X X X X X

BEST OF DIVISION

X X X X X X

**CHAMPIONSHIP
SHORTHAIK ALTERS**

SATURDAY
PB PL RB FH DM RK

SUNDAY
MD PB DB OL LD JR

BOMBAY

TRADITIONAL SOLID DIVISION

BLACK

359 CARICATURES RAMSEY LEWIS 2.6 N 359
 SBT 022008 019 BORN: 02/20/08 TGCA
 Lac Hong Anzo of Caricature
 Caricature Alice Walker
 B: Sharyn and Sig Hauck
 NE O: Al and Val Judson

1 1 1 1 1 1 1

f x x x x x

BEST OF DIVISION/BREED

359 359 359 359 359 359

CHARTREUX

TRADITIONAL SOLID DIVISION

BLUE

360 GRANDBOIS ETIENNE GUITTARD 1.3 N 360
 SBT 060109 026 BORN: 06/01/09 RW SGCA
 RW SGC CherokeeTrails Rolling Thunder
 Janvierie Urielle of Grandbois
 B: Nancy Dionne & Carole McFadden
 NW O: Carole McFadden & Nancy Dionne

1 1 1 1 1 1 1

360 360 360 360 360 360

BEST OF DIVISION/BREED

360 360 360 360 360 360

DEVON REX

TRADITIONAL TABBY & WHITE DIVISION

BLUE MACKEREL TORBIE & WHITE

361 RAININGREXES LUMINARA 1.0 S 361
 SBT 090709 013 BORN: 09/07/09 GC
 GC AnexuS Skywalker
 CH RainingRexes Starry Skye
 B: Maryann Gobat
 NE O: Wendy Garcia

1 1 1 1 1 1 1

361 361 361 361 361 361

BEST OF DIVISION/BREED

361 361 361 361 361 361

**CHAMPIONSHIP
SHORTHAIR ALTERS**

SATURDAY

PB PL RB FH DM RK

SUNDAY

MD PB DB OL LD JR

EXOTIC SHORTHAIR

TRADITIONAL SOLID DIVISION

BLACK

	362 SUNSOAR SAMBUCCA OF BRYNDIAR SBV 051608 081 BORN: 05/16/08 QGC Floricats Bacardi of Silverplanet Pawsh Looky Luca of Boobella B: Shere L. Crossman NE O: Sandra Lopes	2.3 N 362 DGCA NE	
<u>362 362 362 362 362 362</u>	BEST OF DIVISION/BREED		<u>362 362 362 362 362 362</u>

ORIENTAL SHORTHAIR

TRADITIONAL TABBY & WHITE DIVISION

BROWN SPOTTED TABBY & WHITE

	363 BEBOPCATS MEWSIC OF PENGAR SBV 010709 024 BORN: 01/07/09 GC Minghou The Devil In Disguise CH Utau-Neko Dora Explora of Bebopcats B: Sue Keith SC O: Pat Muise/Penny Garrett	1.8 S 363 NOV SC	
<u>363 363 363 363 363 363</u>	BEST OF DIVISION/BREED		<u>363 363 363 363 363 363</u>

SIAMESE

POINTED SOLID DIVISION

SEAL POINT

	364 MINGHOU DANCING SLIPPERS SBT 110902 022 BORN: 11/09/02 GC Blue Isles Raindance of Tayohme CH Minghou Lady Slipper B: Pat-George Muise SC O: Pat Muise/Penny Garrett	7.10 S 364 SGCA SC	
--	--	--------------------------	--

RED POINT

	365 MOLLERCATS RED WOOKIE SBV 121508 039 BORN: 12/15/08 CH Felitan Sir Percival of Mollercats CH Hypnotique Rosetta of Mollercats B: Judith Moller NE O: Karen Ann Moculesski	1.8 N 365 IW SGCA NE	
--	--	----------------------------	--

**CHAMPIONSHIP
SHORTHAIK ALTERS**

SATURDAY

PB PL RB FH DM RK

364 364 364 364 364 365
365 365 365 365 365 364

SUNDAY

MD PB DB OL LD JR

365 364 365 364 365 364
364 365 364 365 364 365

(SIAMESE continued)

BEST OF DIVISION
 2ND BEST OF DIVISION

POINTED TABBY DIVISION

BLUE LYNX POINT

1 1 1 1 1 1

366 MINGHOU BAXTER OF CERISE
 SBV 112209 036 BORN: 11/22/09
 Leggs Elmer's Tune
 RW QGC Bebopecats Maxine of Minghou
 B: PMuise/SKeith/PGarrett
 NE O: Cherry Douglass

0.9 N 366
 NOV

1 1 1 1 1 1

366 366 366 366 366 366

BEST OF DIVISION

366 366 366 366 366 366

364 366 364 364 364 365
365 364 365 365 365 364
366 365 366 366 366 366

BEST OF BREED
 2ND BEST OF BREED
 3RD BEST OF BREED

365 364 365 364 365 364
364 365 366 365 364 366
366 364 364 366 366 365

NON-CHAMPIONSHIP
LONGHAIR HOUSEHOLD PET KITTENS

SATURDAY

PB PL RB FH DM RK

SUNDAY

MD PB DB OL LD JR

TRADITIONAL SOLID DIVISION

BLACK

l l l l l l

401 MINUIT
LH 011410 1044 BORN: 01/14/10
NE 0: Emilie Cherau

0.7 N 401
NE

l l l l l l

TRADITIONAL TABBY DIVISION

BLUE MACKEREL TABBY

l l l l l l

402 EXPERIMENT 626
LH 012010 1023 BORN: 01/20/10
NE 0: Catherine + Jonathan Gargill
A: Catherine Luckstone

0.7 N 402
NE

l l l l l l

TRADITIONAL TORTIE & WHITE DIVISION

BLACK TORTIE & WHITE

A A A A A A

403 ARIELLE
LH 040610 1041 BORN: 04/06/10
NE 0: Claire Hollister Singer

0.5 F 403
NE

A A A A A A

NON-CHAMPIONSHIP
SHORTHAIR HOUSEHOLD PET KITTENS

SATURDAY

PB PL RB FH DM RK

SUNDAY

MD PB DB OL LD JR

TRADITIONAL SOLID & WHITE DIVISION

BLACK & WHITE

A A A | A A 451 HARLEQUIN'S HEARTHROB
PENDING BORN: 05/04/10
NE 0: Audrey L. D. Petschek

| | | | | | 452 MISSINGPARTS
SH 030810 1009 BORN: 03/08/10
MA 0: Gwyneth Hayes

0.4 N 451 A A A A A A
NE

0.6 M 452 | | | | | |
MA

POINTED SOLID DIVISION

BLUE POINT

| | | | | | 453 SAMMY
SH 032710 1045 BORN: 03/27/10
NE 0: Carla Conner/Catherine Dunlap

0.5 N 453 | | | | | |
NE

**NON-CHAMPIONSHIP
LONGHAIR HOUSEHOLD PET ADULTS**

SATURDAY
PB PL RB FH DM RK

SUNDAY
MD PB DB OL LD JR

TRADITIONAL SILVER/SMOKE DIVISION

BLACK SMOKE

| | | | | |

404 TWILIGHTS NEW MOON
LH 091109 1153 BORN: 09/11/09
NE O: Tammy Vizzello
A: Nikia Wight

1.0 S
GM

404 | | | | | |

NE

404 404 404 404 404 404

BEST OF DIVISION

404 404 404 404 404 404

TRADITIONAL TABBY & WHITE DIVISION

BROWN CLASSIC TABBY & WHITE

| | | | | |

405 BENNEE
LH 120509 1280 BORN: 12/05/09
NE O: Janice Sohigian

0.9 N
SEN

405 | | | | | |

NE

BROWN MACKEREL TABBY & WHITE

| | | | | |

406 BARTOX
LH 042108 1427 BORN: 04/21/08
MA O: Ekaterina Eveniya McKenzie

2.4 N
RW SGM

406 | | | | | |

MA

406 406 406 405 405 406
405 405 405 406 406 405

BEST OF DIVISION
2ND BEST OF DIVISION

406 405 406 406 406 405
405 406 405 405 405 406

POINTED SOLID DIVISION

SEAL POINT

| | | | | |

407 BUSTER BROWN
LH 021407 1279 BORN: 02/14/07
NE O: Jan Gregory

3.6 N
MAS

407 | | | | | |

NE

CREAM POINT

| | | | | |

408 DOBBY OF O'MORDHA
LH 040809 1025 BORN: 04/08/09
NE O: Siobhan Moore
A: Courtney Lockwood

1.5 N
IW SGM

408 | | | | | |

NE

408 407 408 408 408 408
407 408 407 407 407 407

BEST OF DIVISION
2ND BEST OF DIVISION

408 408 408 408 408 407
407 407 407 407 407 408

**NON-CHAMPIONSHIP
SHORTHAIR HOUSEHOLD PET ADULTS**

SATURDAY
PB PL RB FH DM RK

SUNDAY
MD PB DB OL LD JR

TRADITIONAL SOLID DIVISION

BLACK

<u>1</u>	<u>1</u>	<u>1</u>	<u>1</u>	<u>1</u>	<u>1</u>	454 I WILL ROCK YOU	0.8 N 454
						SH 010210 1027 BORN: 01/02/10	SEN
						NE O: Karen Bazzinotti	NE

454 454 454 454 454 454

BEST OF DIVISION

X X X X X X

TRADITIONAL TABBY DIVISION

BROWN CLASSIC TABBY

<u>1</u>	<u>1</u>	<u>1</u>	<u>1</u>	<u>1</u>	<u>1</u>	455 WHISKEY	1.1 N 455
						SH 071609 1207 BORN: 07/17/09	SEN
						NE O: Carla Connor/Audrey Hobbs	NE

1 1 1 1 1 1

BLUE MACKEREL TORBIE

<u>1</u>	<u>1</u>	<u>1</u>	<u>1</u>	<u>1</u>	<u>1</u>	456 HEIDI	5.8 S 456
						SH 010105 5438 BORN: 01/01/05	TGM
						MA O: Mary Meyer	MA

1 1 1 1 1 1

455 456 456 455 456 455
456 455 455 456 455 456

BEST OF DIVISION
2ND BEST OF DIVISION

455 456 455 456 455 456
456 454 456 455 456 455

TRADITIONAL SOLID & WHITE DIVISION

BLACK & WHITE

<u>1</u>	<u>1</u>	<u>1</u>	<u>1</u>	<u>1</u>	<u>1</u>	457 RORSCHACH	1.2 N 457
						SH 061909 1286 BORN: 06/19/09	GM
						NE O: Linda Downey	NE

1 1 1 1 1 1

457 457 457 457 457 457

BEST OF DIVISION

457 457 457 457 457 457

TRADITIONAL TORTIE & WHITE DIVISION

BLACK TORTIE & WHITE

<u>1</u>	<u>1</u>	<u>1</u>	<u>1</u>	<u>1</u>	<u>1</u>	458 CHICOPEE MA	3.0 S 458
						SH 090207 1085 BORN: 09/02/07	IW SGM
						NE O: Audrey Hobbs	NE

1 1 1 1 1 1

458 458 458 458 458 458

BEST OF DIVISION

458 458 458 458 458 458

**NON-CHAMPIONSHIP
SHORTHAIR HOUSEHOLD PET ADULTS**

SATURDAY
PB PL RB FH DM RK

SUNDAY
MD PB DB OL LD JR

TRADITIONAL TABBY & WHITE DIVISION

RED MACKEREL TABBY & WHITE

						459 RED ROCKET EXPRESS	3.1 N	459						
						SH 071707 1052 BORN: 07/17/07	IW SGM							
						MA O: Catherine Luckstone		MA						

BROWN MACKEREL TORBIE & WHITE

						460 PETUNIA	2.1 S	460						
						SH 080108 1094 BORN: 08/01/08	IW SGM							
						NE O: Claire Hollister Singer		NE						

460 460 460 460 460 460
459 459 459 459 459 459

BEST OF DIVISION
2ND BEST OF DIVISION

460 460 460 460 460 459
459 459 459 459 459 460

TRADITIONAL SILVER/SMOKE & WHITE DIVISION

BLACK SMOKE & WHITE

						461 TATIANA	1.0 S	461						
						SH 090109 1128 BORN: 09/01/09	SEN							
						NE O: Clair Hollister Singer		NE						

461 461 461 461 461 461

BEST OF DIVISION

461 461 461 461 461 461

POINTED SOLID DIVISION

SEAL POINT

						462 CODY JAMES	4.1 N	462						
						SH 080106 1090 BORN: 08/01/06	RW SGM							
						NE O: Gail Buffi		NE						

						463 SAKI SAN	1.7 N	463						
						SH 021009 1067 BORN: 02/10/09	RW QGM							
						NE O: Sherry Lynn Scales		NE						

CHOCOLATE POINT

						464 CREEPY	1.2 N	464						
						SH 062009 1208 BORN: 06/20/09	SEN							
						NE O: Carla Connor/Audrey Hobbs		NE						

RED POINT

						465 NEWMAN THE CLEONA KID	2.0 N	465						
						SH 092008 1142 BORN: 08/20/08	RW SGM							
						MA O: Gwyneth Hayes		MA						

**NON-CHAMPIONSHIP
SHORTHAIR HOUSEHOLD PET ADULTS**

SATURDAY

PB PL RB FH DM RK

<u>415</u>	<u>464</u>	<u>464</u>	<u>465</u>	<u>464</u>	<u>464</u>
<u>463</u>	<u>465</u>	<u>463</u>	<u>464</u>	<u>462</u>	<u>465</u>
<u>464</u>	<u>463</u>	<u>463</u>	<u>462</u>	<u>463</u>	<u>462</u>

BEST OF DIVISION
2ND BEST OF DIVISION
3RD BEST OF DIVISION

SUNDAY

MD PB DB OL LD JR

<u>415</u>	<u>463</u>	<u>464</u>	<u>465</u>	<u>464</u>	<u>462</u>
<u>463</u>	<u>464</u>	<u>465</u>	<u>464</u>	<u>462</u>	<u>463</u>
<u>462</u>	<u>462</u>	<u>463</u>	<u>462</u>	<u>465</u>	<u>465</u>

NON-CHAMPIONSHIP
LONGHAIR NEW TRAITS CLASS

SATURDAY

PB PL RB FH DM RK

SUNDAY

MD PB DB OL LD JR

MAINE COON

WHITE

A A A A A A

601 PETTEYCATS KRISHNA
SBT 092109 013 BORN: 09/21/09
CH Petteycats Kilimajaro
Petteycats Caramel
B: Cathy Pettey
NE O: Sadie Pettey

+ + + + + +

BEST OF BREED

0.11 F 601 A A A A A A

NE

+ + + + + +

NON-CHAMPIONSHIP
SHORTHAIR NEW TRAITS CLASS

SATURDAY

PB PL RB FH DM RK

SUNDAY

MD PB DB OL LD JR

AMERICAN SHORTHAIR

SEAL SEPIA CLASSIC TABBY & WHITE

1 1 1 i 1 1

602 PURFUR KALASHA OF BEAUCHADOR 1.1 S 602
SBT 080109 006 BORN: 08/01/09
LA SGC Yankeestar MSGT Stripes of Purfur
Yankeestar Camouflage of Purfur
B: Linda Kay Ashley
NE 0: L Ashley & Andre Grenier

A A A 1 A 1

602 602 602 602 602 602

BEST OF BREED

NE
X X X 602 V 602

Cats on the Beach



Cat Show On the Cape



September 11-12, 2010

Marstons Mills East Horace Mann Charter Public School
730 Osterville-West Barnstable Road Marstons Mills, MA

CONGRESSES

Cats on the Beach • September 2010

MALE CONGRESS
LONGHAIR CATS

FH

BIRMAN

POINTED SOLID & WHITE DIVISION

BLUE POINT GLOVED

MIKASU GRAFFITI ARTIST SBT 022509 031 BORN: 02/25/09 1.6 M CH 101 1
RW SGC Mikasu Brave Heart X QGC Mikasu Elegance
B/O: Terry McRae NW
A: Susan Schindelman

BEST OF DIVISION/BREED 101

HIMALAYAN

POINTED SOLID DIVISION

SEAL POINT

HISTORICALS VIENNA SBV 082709 030 BORN: 08/27/09 1.0 M CH 102 1
Radzacatz Bismarck of Hisstoricats X Radzacatz Hermione of Hisstoricats
B/O: Sue/Christian Cherau NE

BEST OF DIVISION/BREED 102

MAINE COON

TRADITIONAL TABBY DIVISION

RED CLASSIC TABBY

DRACONFLY NEEDAHBAH SBT 100309 006 BORN: 10/03/09 0.11 M NOV 106 1
RW SGCCodycats Hendrickson of Dracoony X CH Broadway Lady Amherst of Dracoony
B: Sharon Stegall O: Sharon Stegall/Janet Rosenberg NE
A: Jo-Ann Benedetti

ATLASTCATS PUMPKIN SBT 091209 038 BORN: 09/12/09 0.11 M CH 107 2
TGC Howlyn Fargo of Atlascats X Broadway Purrnado of Atlascats
B/O: Marie Harriman & Chris Condon NE

BEST OF DIVISION 106
2ND BEST OF DIVISION 107

TRADITIONAL SILVER/SMOKE DIVISION

BLACK SMOKE

QUINSIGAMOND TANK OF MAINELYCLASSIC SBT 100109 022 BORN: 10/01/09 0.11 M NOV 111 A
MainelyClassic Yuma of Quinsigamond X Sarajen Sunapee of Quinsigamond
B: Karen/Rob Fleming O: Rae Sammis NE
A: Jean Thompson

BEST OF DIVISION A

SBT 042408 033 SOLID DIV 2.4m 103A 1
WHITE BEST OF DIV 103A

**MALE CONGRESS
LONGHAIR CATS**

FH

(MAINE COON continued)

TRADITIONAL TABBY & WHITE DIVISION

BROWN CLASSIC TABBY & WHITE

KELIMCOONS WYNATTE	SBT 121509 021	BORN: 12/15/09	0.8	M	NOV 112	<u>1</u>
CH Kelimcoons Dodge Charger X QGC Kelimcoons Jolt						
B/O: Rita/Kim/Kelly Berg						NE
KELIMCOONS STORM TROOPER	SBT 121509 020	BORN: 12/15/09	0.8	M	NOV 113	<u>2</u>
CH Kelimcoons Dodge Charger X QGC Kelimcoons Jolt						
B/O: Rita/Kim/Kelly Berg						NE

RED TICKED TABBY & WHITE

COONIFICENT COACH	SBT 072909 018	BORN: 07/28/09	1.1	M	QGC 115	<u>A</u>
LA SGC MainelyClassic Night Stalker X RW CH Coonificent Pomaranca						
B/O: Pat Montanaro						

BEST OF DIVISION	<u>112</u>
2ND BEST OF DIVISION	<u>113</u>
3RD BEST OF DIVISION	<u>X</u>

TRADITIONAL SILVER/SMOKE & WHITE DIVISION

BLACK SILVER TICKED TABBY & WHITE

MTNEST LIEUTENANT PYRENE	SBT 082009 015	BORN: 08/20/09	1.0	M	RW SGC 117	<u>A</u>
1W CH Mainette Philosopher's Stone X Noracoon Tailor Teagarden of MTNEST						
B/O: Judy/David Bernbaum						MA
A: McFadden						

BEST OF DIVISION	<u>X</u>
BEST OF BREED	<u>112</u>
2ND BEST OF BREED	<u>113</u>
3RD BEST OF BREED	<u>106</u>

RAGDOLL

POINTED SOLID & WHITE DIVISION

SEAL POINT MITTED

HUGARAGDOLL JASPER'S WIND WHISPER	SBT 101909 018	BORN: 10/19/09	0.10	M	NOV 122	<u>1</u>
QGC Showdolls Rumble in the Bronx X GC Hugaragdoll Tuckleberry						
B: Alexandra Marinets						NE
O: Sandy Wooster						

MALE CONGRESS
LONGHAIR CATS

FH

(RAGDOLL continued)

SEAL POINT BI-COLOR

WILLOWTREERAGS PETER PAN	SBT 101209 028	BORN: 10/12/09	0.10 M	NOV 125	<u>1</u>
TGC WillowTreeRags Hans Donsen X Mendelian Geneva of WillowTreeRags					
B/O: Mable Roberts					NE
SUNNYBROOK ROMEO	SBT 041506 040	BORN: 04/15/06	4.4 M	QGC 126	<u>2</u>
Buxtonsgardoo Mocha Madness X Buxtonsgardoo Ellamae					
B/O: Denise Celona					NE

BLUE POINT BI-COLOR

WILLOWTREERAGS CLAUD HANSEN	SBT 070108 007	BORN: 07/01/08	2.2 M	RW QGC 129	<u>2</u>
TGC WillowTreeRags Hans Donsen X SerenityRags Savannahs Dream					
B/O: Mable Roberts					NE
DONNASDOLLYS MAXIMILIAN	SBT 041309 011	BORN: 04/13/09	1.4 M	RW QGC 130	<u>1</u>
RW SGC Luvéz Knight Ryder of Donnasdollys X Donnasdollys Diamond Tiara					
B: Donna Cipleý					Q: Lisa Sullo
					NE

BEST OF DIVISION/BREED	<u>122</u>
2ND BEST OF DIVISION/BREED	<u>130</u>
3RD BEST OF DIVISION/BREED	<u>125</u>

SBT082709 010
BlueLynx Point mitted

pointed & white
SIBERIAN

1.0 M	132	<u>1</u>
BOO		<u>132</u>
BOB		<u>122</u>
2BOB		<u>130</u>
3BOB		<u>125</u>

TRADITIONAL SILVER/SMOKE & WHITE DIVISION

BLACK SILVER CLASSIC TABBY & WHITE

DREAKO IZZY	SBT 021009 052	BORN: 02/10/09	1.7 M	NOV 133	<u>A</u>
Purrshka Ivanivich of Dreako X Cooncreole Eva					
B: Ksenia and Deborah McKenzie					O: Anastasia Svetlana McKenzie
					MA

BEST OF DIVISION/BREED	<u>X</u>
------------------------	----------

MALE CONGRESS
SHORTHAIK CATS

FH

AMERICAN SHORTHAIK

TRADITIONAL TABBY & WHITE DIVISION

BROWN CLASSIC TABBY & WHITE

BEAUCHADOR PAINT BOX SBV 052809 005 BORN: 05/28/09 1.3 M RW QGC 201 1
RW QGC Beauchador Silver Star X Beauchador Countess
B/O: Andre Grenier NE
BEST OF DIVISION/BREED 201

BENGAL

TRADITIONAL TABBY DIVISION

BROWN SPOTTED TABBY

NAHANNI AMERICAN GANGSTA SBT 053009 023 BORN: 05/30/09 1.3 M RW QGC 202 A
RW SGC Cukkla King Remeses of Nahanni X Nahanni Bella Bianca
B: Michele Alexion O: Heidi LePage NE
BEST OF DIVISION X

POINTED TABBY DIVISION

SEAL SPOTTED LYNX POINT

SNOWTUNDRA LITTLE CAESAR SBT 121208 019 BORN: 12/12/08 1.8 M QGC 208 1
IW SGC Junglemist Creme Donut of Bengalnd X CH Bengalnd Gingerbread of SnowTundra
B/O: Hermina and Peter Hart NE
BEST OF DIVISION 208
BEST OF BREED 208
2ND BEST OF BREED X

BOMBAY

TRADITIONAL SOLID DIVISION

BLACK

BURMARA BACK IN BLACK OF LUVPURRS SBV 042609 015 BORN: 04/26/09 1.4 M TGC 210 1
IW SGC Rickats Jack Trickortreat X Blacpurl Hade of Burmara
B: Barbara Garneau/D Hetherington O: Chris Unangst/Vanadis Crawford GL
BEST OF DIVISION/BREED 210

MALE CONGRESS
SHORTHAIK CATS

FH

BURMESE

SEPIA SOLID DIVISION

SABLE

WHIPPET OF BURMARA SBT 101908 045 BORN: 10/19/08 1.10 M DGC 211 1
Moravanka Mr Midnight X Moravanka Betty Boop
B: Johanne Maheux-Josee Sicotte Q: Barbara Garneau NE
BEST OF DIVISION/BREED 211

EGYPTIAN MAU

TRADITIONAL SILVER/SMOKE DIVISION

BLACK SILVER SPOTTED TABBY

ARIETTA MAHABBAH AMTAL SBT 090409 015 BORN: 09/04/09 1.0 M RW TGC 212 1
Arietta Alidu Kalila X RW QGC Arietta Namira Isis
B/O: Evelyn Grado-Wolynies MA
A: Claire Turner
BEST OF DIVISION/BREED 212

EXOTIC SHORTHAIK

TRADITIONAL TABBY DIVISION

CREAM CLASSIC TABBY

BEAUCHADOR MES AIEUX SBV 032608 056 BORN: 03/26/08 2.5 M RW NOV 213 1
Catta Lupin X Beauchador Meme
B/O: Andre Grenier NE
BEST OF DIVISION/BREED 213

SPHYNX

POINTED SOLID DIVISION

RED POINT

OPUSONE BUCK OWENS OF CLASSICALCATS SBT 120109 BORN: 12/01/09 0.9 M NOV 215 1
RW SGC Classicalcats Fiero X Classicalcats Mystic of Opus One
B: Martine Lavoie Q: Jack & Phyllis NE
A: M Keith/C Wolfe
BEST OF DIVISION/BREED 215

FEMALE CONGRESS
LONGHAIR CATS

RK

HIMALAYAN

POINTED TORTIE DIVISION

BLUE TORTIE POINT

NYMEWS GWYNETH PAWLTR0 SBV 042309 041 BORN: 04/23/09 1.4 F RW QGC 103 1
 GC NYMews Banyon McDuff X CH NYMews Mewdy Blues
 B/O: S Dockstader NE
 BEST OF DIVISION/BREED 103

MAINE COON

TRADITIONAL SOLID DIVISION

BLACK

AMAYALYNX CARBON FTPRINTS OF MTNEST SBT 120309 008 BORN: 12/03/09 0.9 F NOV 104 1
 LA SGC MTNEST Dark Side O The Moon X Tuscaloosa Cruella of Amayalynx
 B: Katherina Krenn O: Judy/David Bernbaum MA
 A: McFadden
 BEST OF DIVISION 104

TRADITIONAL TABBY DIVISION

BROWN TICKED TABBY

BROADSWAY DAMARISCOTTA SBT 011010 015 BORN: 01/10/10 0.8 F NOV 105 1
 IW SGC Maineyclassic Rocky of Broadsway X CH Williamina Chocolate Ripple
 B/O: Jennifer Sable/Jean Thompson SE

BROWN CLASSIC TORBIE

DRACONFLY AIYANA OF BEIGATTI SBT 100209 015 BORN: 10/02/09 0.11 F CH 108 1
 SGC RW Codycats Hendrickson of Dracoonfly X CH Dracoonfly Ally Shrimp
 B: Sharon Stegall O: Jo-Ann Benedetti NE
 CODYCATS MADELINE OF MAINETALES SBT 032703 BORN: 03/27/03 7.5 F RW QGC 109 3
 QGC Codycats Sterling Zeus X Codycats Diamond Roux
 B: Maryrose Sanchez O: Susan Erikson NE
 A: Lisa Burtsche

BROWN MACKEREL TORBIE

ATLASTCATS DUNKIN SBT 110109 015 BORN: 11/01/09 0.10 F NOV 110 1
 Fogcity Julian McMahon X Atlascats Gevalia
 B/O: Marie Harriman & Chris Condon
 SBT 042207 030 BR CL Torbie 3.4 F
 BEST OF DIVISION 116B NE 2
 2ND BEST OF DIVISION 108
 3RD BEST OF DIVISION 105

FEMALE CONGRESS
LONGHAIR CATS

RK

(MAINE COON continued)

TRADITIONAL TABBY & WHITE DIVISION

BROWN CLASSIC TABBY & WHITE

SHARMANI YANKEEROSE OF KAIZAPURRIN SBT 102508 020 BORN: 10/25/08 1.10 F NOV 114 1
 RW GC Flitten's Gryphon X Sharmani Georgy Girl
 B: Sharon/Manny Strauch O: Lisa Burtsche NE
 A: Susan Erikson

BROWN CLASSIC TORBIE & WHITE

HOLLISHILL EVANGELINE OF KELIMCOONS SBT 060707 022 BORN: 06/07/07 3.3 F DGC 116 2
 Cabincoon Quintus Arrius X Hollishill Cosette
 B: Joanne Ezepek O: Rita/Kim/Kelly Berg NE

SBT 110409002

010F
 BEST OF DIVISION
 2ND BEST OF DIVISION
 3RD
 BEST OF BREED
 2ND BEST OF BREED
 3RD BEST OF BREED

116A 1
116A
114
116
108
116A
104

NORWEGIAN FOREST

TRADITIONAL SOLID DIVISION

BLACK

SWEETWOOD BEBE BILLY SBT 120409 017 BORN: 12/04/09 0.9 F NOV 118 1
 CH Morgan av Skara Brae of Finnishline X CH Quinsigamond Rosa of Sweetwood
 B/O: Lorraine Vavra NE

BEST OF DIVISION

118

TRADITIONAL TABBY & WHITE DIVISION

BLUE CLASSIC TABBY & WHITE

S*MAR'MICHELS NEW CASTLE SBT 110709 010 BORN: 11/07/09 0.10 F QGC 119 A
 S*Icewoods Cherokee X S*Sherwoodkogen Florida JW
 B: Marika Soreskog O: Lorraine Vavra NE

CREAM CLASSIC TABBY & WHITE

INTO WISHIN INGE SBT 032108 014 BORN: 03/21/08 2.5 F SGC 120 2
 IW SGC OS S*Aristo Limaz Chief Nacona X RW SGC Hanneav Boxerhaven
 B: Melissa Alexander O: Melissa & George Alexander NE

BEST OF DIVISION
 2ND BEST OF DIVISION

118
120

FEMALE CONGRESS
LONGHAIR CATS

RK

(NORWEGIAN FOREST continued)

BEST OF BREED
2ND BEST OF BREED
3RD BEST OF BREED

118
120
X

PERSIAN

TRADITIONAL TORTIE & WHITE DIVISION

BLACK TORTIE & WHITE

BERRYHILLE SAND PEBBLES OF TINAZ SBV 072009 010 BORN: 07/20/09 1.1 F QGC 121
IW Berryhille Blast Off X Berryhille Bubbles
B: Mary Krause O: Christina Baumer & Mary Krause MA

BEST OF DIVISION/BREED

i
121

RAGDOLL

POINTED SOLID & WHITE DIVISION

SEAL POINT MITTED

WILLOWTREERAGS BELLEVUE MIRAMAR SBT 101609 025 BORN: 10/16/09 0.10 F NOV 123
RW SGC WillowTreeRags Apollo Amadeo X IowasBestRags Holly of WillowTreeRags
B/O: Mable Roberts NE

SEAL POINT BI-COLOR

WILLOWTREERAGS GENEVIEVE HANSDATTER SBT 101209 012 BORN: 10/12/09 0.10 F TGC 124
TGC WillowTreeRags Hans Donsen X Mendelian Geneva of WillowTreeRags
B/O: Mable Roberts NE

BLUE POINT MITTED

RAGANGELS HARMONY OF VERITASDOLLS SBT 061509 010 BORN: 06/15/09 1.2 F CH 127
Cadbury of Sunnybrook X DGC RagAngels Ms. Muffin
B: Sandy Wooster O: Suzanne Philbrick NE

BLUE POINT BI-COLOR

RAGANGELS MS DOLLY MAE SBT 092809 012 BORN: 09/28/09 0.11 F NOV 128
QGC SunnyBrook Romeo X CH RagAngels Ms Daisy Mae
B/O: Sandy Wooster NE

DOLLHOUSE SKYDANCER OF VERITASDOLLS SBT 082808 055 BORN: 08/28/08 2.0 F TGC 131
Dollhouse Bruno Magli X Dollhouse Paris Tilton
B: JaNeil Cillessen O: Suzanne Philbrick NF

BEST OF DIVISION
2ND BEST OF DIVISION
3RD BEST OF DIVISION

128
129
127

FEMALE CONGRESS
LONGHAIR CATS

RK

(RAGDOLL continued)

POINTED TABBY & WHITE DIVISION

SEAL LYNX POINT MITTED

MEGAILEE SNOWTYGER OF VERITASDOLLS SBT 082809 010 BORN: 08/28/09 1.0 F
Clarkstonrags Maxwell Rockstar X CajunRagdolls Dolly of Megaillee
B: Gail Stone O: Suzanne Philbrick

NOV 132

A

NE

X

BEST OF DIVISION

BEST OF BREED

2ND BEST OF BREED

3RD BEST OF BREED

128

124

127

**FEMALE CONGRESS
SHORTHAIK CATS**

RK

BENGAL

TRADITIONAL TABBY DIVISION

BROWN SPOTTED TABBY

NAHANNI AGED TO PERFECTION SBT 053009 039 BORN: 05/30/09 1.3 F NOV 203 1
 RW SGC Cukkia King Rameses of Nahanni X Nahanni Bella Bianca
 B/O: Michele Alexion NE

ANJOU HER ROYAL SHYNESS MADELINE SBT 081109 003 BORN: 08/11/09 1.1 F NOV 204 A
 Legacie Oh Henri of Anjou X CH Gogees Olivia Enchants of Anjou
 B/O: Victoria Jeffers MA

BROWN MARBLED TABBY

JAZZLE LITTLE COBRA OF SANOWTUNDRA SBT 082009 019 BORN: 08/20/09 1.0 F NOV 205 A
 Kingsmark Zoolander of Jazzle X Jazzle Twinkle Twinkle Little Star
 B: Paula Elson O: Hermina and Peter Hart NE

BEST OF DIVISION 203
 2ND BEST OF DIVISION X
 3RD BEST OF DIVISION X

TRADITIONAL SILVER/SMOKE DIVISION

BLACK SILVER SPOTTED TABBY

COZYCOUNTRY AMERICAS NEXT TOP MODEL SBT 121009 037 BORN: 12/10/09 0.9 F NOV 206 2
 RW SGC Cozy Country Friday Night Lights X RW QGC Boulderridge 2 Hot 2 Handle
 B/O: Heidi LePage NE

SILVERBELLE OF BENGALAND SBT 111909 002 BORN: 11/19/09 0.9 F CH 207 1
 Junglemist Comin Attrakton of Medoz X CH Trender Stormi Cloud
 B: Trina A Lally O: Hugh/Peggy Price MA
 A: Donna Syverson

BEST OF DIVISION 207
 2ND BEST OF DIVISION 206
 BEST OF BREED 203
 2ND BEST OF BREED 207
 3RD BEST OF BREED 206

BOMBAY

TRADITIONAL SOLID DIVISION

BLACK

BURMARA FATA MORGANA SBV 010210 008 BORN: 01/02/10 0.8 F NOV 209 1
 IW SGC Rickats Jack Trickortreat X Blacpur Jade of Burmara
 B: Barbara Garneau-Jean Campeau O: V Korotaev-E Korotaeva NE
 A: Barbara Garneau

FEMALE CONGRESS
SHORTHAIK CATS

RK

(BOMBAY continued)

BEST OF DIVISION/BREED

209

SIAMESE

POINTED SOLID DIVISION

CHOCOLATE POINT

ABHA BROWNSUGARKISS OF MINGHOU/CF SBT 072409 049 BORN: 07/24/09 1.1 F
Bel Canto Reveille of Shboi X GC Minghou Chloe's Choice
B: Carole Pulkowski/Pat Muise Q: Pat - G Muise/Penny Garrett

GC 214

SC

BEST OF DIVISION/BREED

214

**CHAMPIONSHIP
LONGHAIR CATS**

SATURDAY

PB PL RB FH DM RK

SUNDAY

MA PB DB OL LD JR

ROB

BIRMAN

POINTED SOLID & WHITE DIVISION

BLUE POINT GLOVED

— — — — <u>i</u> — —	101 MIKASU GRAFFITI ARTIST	1.6 M 101	<u>1</u> — — — — —
	SBT 022509 031 BORN: 02/25/09	CH	
	RW SGC MikaSu Brave Heart		
	QGC MikaSu Elegance		
	NW B/O: Terry McRae	NW	
	A: Susan Schindelman		

— — — — <u>101</u> — —	BEST OF DIVISION/BREED	<u>101</u> — — — — —
------------------------	------------------------	----------------------

HIMALAYAN

POINTED SOLID DIVISION

SEAL POINT

— — — — <u>1</u> — —	102 HISSTORICATS VIENNA	1.0 M 102	<u>1</u> — — — — —
	SBV 082709 030 BORN: 08/27/09	CH	
	Radzaczat Bismarck of Hisstoricats		
	Radzaczat Hermione of Hisstoricats		
	NE B/O: Sue/Christian Cherau	NE	

— — — — <u>102</u> — —	BEST OF DIVISION	<u>102</u> — — — — —
------------------------	------------------	----------------------

POINTED TORTIE DIVISION

BLUE TORTIE POINT

— — — — <u>1</u> — —	103 NYMEWS GWYNETH PAWLTR0	1.4 F 103	<u>1</u> — — — — —
	SBV 042309 041 BORN: 04/23/09	RW QGC	
	GC NYMews Banyon McDuff		
	CH NYMews Mewdy Blues		
	NE B/O: S Dockstader	NE	

— — — — <u>103</u> — —	BEST OF DIVISION	<u>103</u> — — — — —
------------------------	------------------	----------------------

— — — — <u>103</u> — —	BEST OF BREED	<u>103</u> — — — — —
------------------------	---------------	----------------------

— — — — <u>102</u> — —	2ND BEST OF BREED	<u>102</u> — — — — —
------------------------	-------------------	----------------------

**CHAMPIONSHIP
LONGHAIR CATS**

SATURDAY

PB PL RB FH DM RK

SUNDAY

TD PB DB OL LD JR

RB

MAINE COON

TRADITIONAL SOLID DIVISION

BLACK

1	104	AMAYALYNX CARBON FTPRINTS OF MTNEST SBT 120309 008 BORN: 12/03/09 LA SGC MTNEST Dark Side O The Moon Tuscaloosa Cruella of Amayalynx B: Katherina Krenn MA O: Judy/David Bernbaum A: McFadden	0.9 F NOV	104	1
---	-----	---	--------------	-----	---

1 103A 104	103A SBT 042408033 BEST OF DIVISION 2nd Div	2.4m 103A 104 103A
------------------	---	--------------------------

TRADITIONAL TABBY DIVISION

BROWN TICKED TABBY

1	105	BROADSWAY DAMARISCOTTA SBT 011010 015 BORN: 01/10/10 IW SGC Maineyclassic Rocky of Broadway CH Williamina Chocolate Ripple SE B/O: Jennifer Sable/Jean Thompson	0.8 F NOV	105	1
---	-----	---	--------------	-----	---

RED CLASSIC TABBY

1	106	DRACONFLY NEEDAHBAH SBT 100309 006 BORN: 10/03/09 RW SGC Codycats Hendrickson of Dracoonyfly CH Broadway Lady Amherst of Dracoonyfly B: Sharon Stegall NE O: Sharon Stegall/Janet Rosenberg A: Jo-Ann Benedetti	0.11 M NOV	106	1
---	-----	---	---------------	-----	---

2	107	ATLASTCATS PUMPKIN SBT 091209 038 BORN: 09/12/09 TGC Howlyn Fargo of Atlascats Broacsway Purrnado of Atlascats NE B/O: Marie Harriman & Chris Condon	0.11 M CH	107	2
---	-----	--	--------------	-----	---

BROWN CLASSIC TORBIE

1	108	DRACONFLY AIYANA OF BEIGATTI SBT 100209 015 BORN: 10/02/09 SGC RW Codycats Hendrickson of Dracoonyfly CH Dracoonyfly Ally Shrimp B: Sharon Stegall NE O: Jo-Ann Benedetti	0.11 F CH	108	1
---	-----	--	--------------	-----	---

(color class continued)

**CHAMPIONSHIP
LONGHAIR CATS**

SATURDAY
PB PL RB FH DM RK

SUNDAY
PB DB OL LD JR

(BROWN CLASSIC TORBIE MAINE COON continued)

---	---	---	---	<u>2</u>	---	109	CODYCATS MADELINE OF MAINETALES	7.5 F	109	<u>2</u>	---	---	---	---	---
							SBT 032703 BORN: 03/27/03	RW QGC							
							QGC Codycats Sterling Zeus								
							Codycats Diamond Roux								
							B: Maryrose Sanchez								
						NE	O: Susan Erikson			NE					
							A: Lisa Burtsche								

---	---	---	---	<u>3</u>	---	110	ATLASTCATS DUNKIN	0.10 F	110	<u>3</u>	---	---	---	---	---
							SBT 110109 015 BORN: 11/01/09	NOV							
							Fogcity Julian McMahon								
							Atlastcats Gevalia								
						NE	B/O: Marie Harriman & Chris Condon			NE					

---	---	---	---	<u>105</u>	---		BEST OF DIVISION			<u>105</u>	---	---	---	---	---
---	---	---	---	<u>106</u>	---		2ND BEST OF DIVISION			<u>106</u>	---	---	---	---	---
---	---	---	---	<u>108</u>	---		3RD BEST OF DIVISION			<u>108</u>	---	---	---	---	---

TRADITIONAL SILVER/SMOKE DIVISION

BLACK SMOKE

---	---	---	---	<u>A</u>	---	111	QUINSIGAMOND TANK OF MAINELYCLASSIC	0.11 M	111	<u>A</u>	---	---	---	---	---
							SBT 100109 022 BORN: 10/01/09	NOV							
							MainelyClassic Yuma of Quinsigamond								
							Sarajen Sunapee of Quinsigamond								
							B: Karen/Rob Fleming								
						NE	O: Rae Sarmis			NE					
							A: Jean Thompson								
---	---	---	---	<u>X</u>	---		BEST OF DIVISION			<u>X</u>	---	---	---	---	---

TRADITIONAL TABBY & WHITE DIVISION

BROWN CLASSIC TABBY & WHITE

---	---	---	---	<u>1</u>	---	112	KELIMCOONS WYNATTE	0.8 M	112	<u>1</u>	---	---	---	---	---
							SBT 121509 021 BORN: 12/15/09	NOV							
							CH Kelimcoons Dodge Charger								
							QGC Kelimcoons Jolt								
						NE	B/O: Rita/Kim/Kelly Berg			NE					

(color class continued)

**CHAMPIONSHIP
LONGHAIR CATS**

SATURDAY
PB PL RB FH DM RK

SUNDAY
~~MA~~ PB DB OL LD JR

(BROWN CLASSIC TABBY & WHITEMAINE COON continued)

---	---	---	<u>2</u>	---	113	KELIMCOONS STORM TROOPER	0.8 M	113	---	---	---	---	---	---	---
						SBT 121509 020 BORN: 12/15/09									
						CH Kelimcoons Dodge Charger									
						QGC Kelimcoons Jolt									
					NE	B/O: Rita/Kim/Kelly Berg		NE							

---	---	---	<u>3</u>	---	114	SHARMANI YANKEEROSE OF KATZAPURRIN	1.10 F	114	---	---	---	---	---	---	---
						SBT 102508 020 BORN: 10/25/08									
						RW GC Flitten's Gryphon									
						Sharmani Georgy Girl									
						B: Sharon/Manny Strauch									
					NE	O: Lisa Burtsche		NE							
						A: Susan Erikson									

RED TICKED TABBY & WHITE

---	---	---	<u>A</u>	---	115	COONIFICENT COACH	1.1 M	115	---	---	---	---	---	---	---
						SBT 072909 018 BORN: 07/28/09									
						LA SGC MainelyClassic Night Stalker									
						RW CH Coonificent Pomarancza									
						B/O: Pat Montanaro									

BROWN CLASSIC TORBIE & WHITE

---	---	---	<u>A</u>	---	116	HOLLISHILL EVANGELINE OF KELIMCOONS	3.3 F	116	---	---	---	---	---	---	---
						SBT 060707 022 BORN: 06/07/07									
						Cabincoon Quintus Arrius									
						Hollishill Cosette									
						B: Joanne Ezepek									
					NE	O: Rita/Kim/Kelly Berg		NE							

---	---	---	<u>112</u>	---		BEST OF DIVISION		<u>112</u>	---	---	---	---	---	---	---
---	---	---	<u>113</u>	---		2ND BEST OF DIVISION		<u>113</u>	---	---	---	---	---	---	---
---	---	---	<u>114</u>	---		3RD BEST OF DIVISION		<u>114</u>	---	---	---	---	---	---	---

TRADITIONAL SILVER/SMOKE & WHITE DIVISION

BLACK SILVER TICKED TABBY & WHITE

---	---	---	<u>A</u>	---	117	MTNEST LIEUTENANT PYRENE	1.0 M	117	---	---	---	---	---	---	---
						SBT 082009 015 BORN: 08/20/09									
						IW CH Mainette Philosopher's Stone									
						Noracoon Tailor Teagarden of MTNEST									
					MA	B/O: Judy/David Bernbaum		MA							
						A: McFadden									

---	---	---	<u>X</u>	---		BEST OF DIVISION		<u>X</u>	---	---	---	---	---	---	---
---	---	---	<u>112</u>	---		BEST OF BREED		<u>112</u>	---	---	---	---	---	---	---
---	---	---	<u>105</u>	---		2ND BEST OF BREED		<u>105</u>	---	---	---	---	---	---	---
---	---	---	<u>113</u>	---		3RD BEST OF BREED		<u>106</u>	---	---	---	---	---	---	---

**CHAMPIONSHIP
LONGHAIR CATS**

SATURDAY

PB PL RB FH DM RK

SUNDAY

MD PB DB OL LD JR

RB

NORWEGIAN FOREST

TRADITIONAL SOLID DIVISION

BLACK

—	—	—	—		—	118	SWEETWOOD BEBE BILLY	0.9 F	118		—	—	—	—	—	—	—	—	—	—	
							SBT 120409 017 BORN: 12/04/09		NOV												
							CH Morgan av Skara Brae of Finnishline														
							CH Quinsigamond Rosa of Sweetwood														
						NE	B/O: Lorraine Vavra			NE											

—	—	—	—	118	—		BEST OF DIVISION			118	—	—	—	—	—	—	—	—	—	—
---	---	---	---	-----	---	--	------------------	--	--	-----	---	---	---	---	---	---	---	---	---	---

TRADITIONAL TABBY & WHITE DIVISION

BLUE CLASSIC TABBY & WHITE

—	—	—	—		—	119	S*MAR'MICHELS NEW CASTLE	0.10 F	119		—	—	—	—	—	—	—	—	—	—	
							SBT 110709 010 BORN: 11/07/09		QGC												
							S*Icewoods Cherokee														
							S*Sherwoodkogen Florida JW														
						B:	Marika Soreskog														
						NE	O: Lorraine Vavra			NE											

CREAM CLASSIC TABBY & WHITE

—	—	—	—		—	120	INTO WISHIN INGE	2.5 F	120	A	—	—	—	—	—	—	—	—	—	—	
							SBT 032108 014 BORN: 03/21/08		SGC												
							IW SGC OS S*Aristo Limaz Chief Nacona														
							RW SGC Hanneav Boxerhaven														
						B:	Melissa Alexander														
						NE	O: Melissa & George Alexander			NE											

—	—	—	—	120	—		BEST OF DIVISION			119	—	—	—	—	—	—	—	—	—	—
—	—	—	—	119	—		2ND BEST OF DIVISION			X	—	—	—	—	—	—	—	—	—	—

—	—	—	—	120	—		BEST OF BREED			119	—	—	—	—	—	—	—	—	—	—
—	—	—	—	119	—		2ND BEST OF BREED			118	—	—	—	—	—	—	—	—	—	—
—	—	—	—	118	—		3RD BEST OF BREED			X	—	—	—	—	—	—	—	—	—	—

**CHAMPIONSHIP
LONGHAIR CATS**

SATURDAY

PB PL RB FH DM RK

SUNDAY

MD PB DB OL LD JR

RB

PERSIAN

TRADITIONAL TORTIE & WHITE DIVISION

BLACK TORTIE & WHITE

_____ <u>1</u> _____	121 BERRYHILLE SAND PEBBLES OF TINAZ SBV 072009 010 BORN: 07/20/09 IW Berryhille Blast Off Berryhille Bubbles B: Mary Krause MA O: Christina Baumer & Mary Krause	1.1 F 121 QGC	_____ <u>1</u> _____
_____ <u>121</u> _____	BEST OF DIVISION/BREED		_____ <u>121</u> _____

RAGDOLL

POINTED SOLID & WHITE DIVISION

SEAL POINT MITTED

_____ <u>1</u> _____	122 HUGARAGDOLL JASPER'S WIND WHISPER SBT 101909 018 BORN: 10/19/09 QGC Showdolls Rumble in the Bronx GC Hugaragdoll Tuckleberry B: Alexandra Marinets NE O: Sandy Wooster	0.10 M 122 NOV	_____ <u>1</u> _____
_____ <u>A</u> _____	123 WILLOWTREERAGS BELLEVUE MIRAMAR SBI 101609 025 BORN: 10/16/09 RW SGC WillowTreeRags Apollo Amadeo IowasBestRags Holly of WillowTreeRags NE B/O: Mable Roberts	0.10 F 123 NOV	_____ <u>A</u> _____

SEAL POINT BI-COLOR

_____ <u>1</u> _____	124 WILLOWTREERAGS GENEVIEVE HANSDATTER SBT 101209 012 BORN: 10/12/09 TGC WillowTreeRags Hans Donsen Mendelian Geneva of WillowTreeRags NE B/O: Mable Roberts	0.10 F 124 TGC	_____ <u>3</u> _____
_____ <u>3</u> _____	125 WILLOWTREERAGS PETER PAN SBT 101209 028 BORN: 10/12/09 TGC WillowTreeRags Hans Donsen Mendelian Geneva of WillowTreeRags NE B/O: Mable Roberts	0.10 M 125 NOV	_____ <u>1</u> _____

(color class continued)

**CHAMPIONSHIP
LONGHAIR CATS**

SATURDAY

PB PL RB FH DM RK

SUNDAY

PB DB OL LD JR

(SEAL POINT BI-COLOR RAGDOLL continued)

---	---	---	---	<u>2</u>	---	126	SUNNYBROOK ROMEO	4.4	M	126	---	---	---	---	---	---	---	---	---	---
							SBT 041506 040 BORN: 04/15/06													
							Buxtonsgardoo Mocha Madness													
							Buxtonsgardoo Ellamae													
							NE B/O: Denise Celona													

BLUE POINT MITTED

---	---	---	---	<u>1</u>	---	127	RAGANGELS HARMONY OF VERITASDOLLS	1.2	F	127	---	---	---	---	---	---	---	---	---	---
							SBT 061509 010 BORN: 06/15/09													
							Cadbury of Sunnybrook													
							DGC RagAngels Ms. Muffin													
							B: Sandy Wooster													
							NE O: Suzanne Philbrick													

BLUE POINT BI-COLOR

---	---	---	---	<u>1</u>	---	128	RAGANGELS MS DOLLY MAE	0.11	F	128	---	---	---	---	---	---	---	---	---	---
							SBT 092809 012 BORN: 09/28/09													
							QGC SunnyBrook Romeo													
							CH RagAngels Ms Daisy Mae													
							NE B/O: Sandy Wooster													

---	---	---	---	<u>2</u>	---	129	WILLOWTREERAGS CLAUS HANSEN	2.2	M	129	---	---	---	---	---	---	---	---	---	---
							SBT 070108 007 BORN: 07/01/08													
							TGC WillowTreeRags Hans Donsen													
							SerenityRags Savannahs Dream													
							NE B/O: Mable Roberts													

---	---	---	---	<u>3</u>	---	130	DONNASDOLLYS MAXIMILIAN	1.4	M	130	---	---	---	---	---	---	---	---	---	---
							SBT 041309 011 BORN: 04/13/09													
							RW SGC Luvez Knight Ryder of Donnasdollys													
							Donnasdollys Diamond Tiara													
							B: Donna Ciplej													
							NE O: Lisa Sullo													

---	---	---	---	<u>4</u>	---	131	DOLLHOUSE SKYDANCER OF VERITASDOLLS	2.0	F	131	---	---	---	---	---	---	---	---	---	---
							SBT 082808 055 BORN: 08/28/08													
							Dollhouse Bruno Magli													
							Dollhouse Paris Tilton													
							B: JaNeil Cillessen													
							NE O: Suzanne Philbrick													

---	---	---	---	<u>124</u>	---															
---	---	---	---	<u>127</u>	---															
---	---	---	---	<u>126</u>	---															

BEST OF DIVISION
2ND BEST OF DIVISION
3RD BEST OF DIVISION

---	---	---	---	<u>130</u>	---															
---	---	---	---	<u>122</u>	---															
---	---	---	---	<u>128</u>	---															

**CHAMPIONSHIP
LONGHAIR CATS**

SATURDAY

PB PL RB FH DM RK

SUNDAY

MD PB DB OL LD JR

RB

(RAGDOLL continued)

POINTED TABBY & WHITE DIVISION

Blue
SEAL LYNX POINT MITTED

---	---	---	---	<u>1</u>	---	132	MEGAILEE SNOWTYGER OF VERITASDOLLS	1.0	F	132	<u>1</u>	---	---	---	---	---	---
							SBT 082809 010 BORN: 08/28/09										
							Clarkstonrags Maxwell Rockstar										
							CajunRagdolls Dolly of Megailee										
							B: Gail Stone										
							NE O: Suzanne Philbrick										

---	---	---	---	<u>132</u>	---		BEST OF DIVISION					<u>132</u>	---	---	---	---	---
---	---	---	---	<u>124</u>	---		BEST OF BREED					<u>130</u>	---	---	---	---	---
---	---	---	---	<u>125</u>	---		2ND BEST OF BREED					<u>122</u>	---	---	---	---	---
---	---	---	---	<u>126</u>	---		3RD BEST OF BREED					<u>120</u>	---	---	---	---	---

SIBERIAN

TRADITIONAL SILVER/SMOKE & WHITE DIVISION

BLACK SILVER CLASSIC TABBY & WHITE

---	---	---	---	<u>A</u>	---	133	DREAKO IZZY	1.7	M	133	<u>A</u>	---	---	---	---	---	---
							SBT 021009 052 BORN: 02/10/09										
							Purrshka Ivanivich of Dreako										
							Cooncreole Eva										
							B: Ksenia and Deborah McKenzie										
							MA O: Anastasia Svetlana McKenzie										

---	---	---	---	<u>X</u>	---		BEST OF DIVISION/BREED					<u>X</u>	---	---	---	---	---
-----	-----	-----	-----	----------	-----	--	------------------------	--	--	--	--	----------	-----	-----	-----	-----	-----

**CHAMPIONSHIP
SHORTHAI R CATS**

SATURDAY

PB PL RB FH DM RK

SUNDAY

~~TR~~ PB DB OL LD JR

RB

AMERICAN SHORTHAI R

TRADITIONAL TABB Y & WHITE DIVISION

BROWN CLASSIC TABB Y & WHITE

—	—	—	<u>1</u>	—	201	BEAUCHADOR PAINT BOX	1.3 M	201	<u>1</u>	—	—	—	—	—
						SBV 052809 005 BORN: 05/28/09	RW QGC							
						RW QGC Beauchador Silver Star								
						Beauchador Countess								
					NE	B/O: Andre Grenier		NE						
—	—	—	<u>201</u>	—					<u>201</u>	—	—	—	—	—
						BEST OF DIVISION/BREED								

BENGAL

TRADITIONAL TABB Y DIVISION

BROWN SPOTTED TABB Y

—	—	—	<u>2</u>	—	202	NAHANNI AMERICAN GANGSTA	1.3 M	202	<u>1</u>	—	—	—	—	—
						SBT 053009 023 BORN: 05/30/09	RW QGC							
						RW SGC Cukkia King Remeses of Nahanni								
						Nahanni Bella Bianca								
						B: Michele Alexion								
					NE	O: Heidi LePage		NE						
—	—	—	<u>1</u>	—	203	NAHANNI AGED TO PERFECTION	1.3 F	203	<u>2</u>	—	—	—	—	—
						SBT 053009 039 BORN: 05/30/09	NOV							
						RW SGC Cukkia King Rameses of Nahanni								
						Nahanni Bella Bianca								
					NE	B/O: Michele Alexion		NE						
—	—	—	<u>A</u>	—	204	ANJOU HER ROYAL SHYNESS MADELINE	1.1 F	204	<u>A</u>	—	—	—	—	—
						SBT 081109 003 BORN: 08/11/09	NOV							
						Legacie Oh Henri of Anjou								
						CH Gogees Olivia Enchants of Anjou								
					MA	B/O: Victoria Jeffers		MA						

BROWN MARBLED TABB Y

—	—	—	<u>A</u>	—	205	JAZZLE LITTLE COBRA OF SANOWTUNDRA	1.0 F	205	<u>A</u>	—	—	—	—	—
						SBT 082009 019 BORN: 08/20/09	NOV							
						Kingsmark Zoolander of Jazzle								
						Jazzle Twinkle Twinkle Little Star								
						B: Paula Elson								
					NE	O: Hermina and Peter Hart		NE						
—	—	—	<u>203</u>	—					<u>202</u>	—	—	—	—	—
			<u>203</u>						<u>203</u>	—	—	—	—	—
			<u>X</u>						<u>X</u>	—	—	—	—	—
						BEST OF DIVISION								
						2ND BEST OF DIVISION								
						3RD BEST OF DIVISION								

**CHAMPIONSHIP
SHORTHAIR CATS**

SATURDAY

PB PL RB FH DM RK

SUNDAY

~~NO~~ PB DB OL LD JR

RB

(BENGAL continued)

TRADITIONAL SILVER/SMOKE DIVISION

BLACK SILVER SPOTTED TABBY

_____	<u>1</u>	_____	206	COZYCOUNTRY AMERICAS NEXT TOP MODEL	0.9 F	206	<u>2</u>	_____	_____	_____
_____		_____		SBT 121009 037 BORN: 12/10/09	NOV			_____	_____	_____
_____		_____		RW SGC Cozy Country Friday Night Lights				_____	_____	_____
_____		_____		RW QGC Boulderridge 2 Hot 2 Handle				_____	_____	_____
_____		_____		NE B/O: Heidi LePage				_____	_____	_____
_____	<u>2</u>	_____	207	SILVERBELLE OF BENGALAND	0.9 F	207	<u>1</u>	_____	_____	_____
_____		_____		SBT 111909 002 BORN: 11/19/09	CH			_____	_____	_____
_____		_____		Junglemist Comin Attrakton of Medoz				_____	_____	_____
_____		_____		CH Trender Stormi Cloud				_____	_____	_____
_____		_____		B: Trina A Lally				_____	_____	_____
_____		_____		MA O: Hugh/Peggy Price				_____	_____	_____
_____		_____		A: Donna Syverson				_____	_____	_____
_____		_____		BEST OF DIVISION				_____	_____	_____
_____		_____		2ND BEST OF DIVISION				_____	_____	_____

POINTED TABBY DIVISION

SEAL SPOTTED LYNX POINT

_____	<u>1</u>	_____	208	SNOWTUNDRA LITTLE CAESAR	1.8 M	208	<u>1</u>	_____	_____	_____
_____		_____		SBT 121208 019 BORN: 12/12/08	QGC			_____	_____	_____
_____		_____		IW SGC Junglemist Creme Donut of Bengalnd				_____	_____	_____
_____		_____		CH Bengalnd Gingerbread of SnowTundra				_____	_____	_____
_____		_____		NE B/O: Hermina and Peter Hart				_____	_____	_____
_____		_____		BEST OF DIVISION				_____	_____	_____
_____		_____		BEST OF BREED				_____	_____	_____
_____		_____		2ND BEST OF BREED				_____	_____	_____
_____		_____		3RD BEST OF BREED				_____	_____	_____

BOMBAY

TRADITIONAL SOLID DIVISION

BLACK

_____	<u>2</u>	_____	209	BURMARA FATA MORGANA	0.8 F	209	<u>2</u>	_____	_____	_____
_____		_____		SBV 010210 008 BORN: 01/02/10	NOV			_____	_____	_____
_____		_____		IW SGC Rickats Jack Trickortreat				_____	_____	_____
_____		_____		Biacpur Jade of Burmara				_____	_____	_____
_____		_____		B: Barbara Garneau-Jean Campeau				_____	_____	_____
_____		_____		NE O: V Korotaev-E Korotaeva				_____	_____	_____
_____		_____		A: Barbara Garneau				_____	_____	_____

(color class continued)

**CHAMPIONSHIP
SHORTHAIK CATS**

SATURDAY
PB PL RB FH DM RK

SUNDAY
PB DB OL LD JR

(BLACK BOMBAY continued)

---	---	---	---	<u>1</u>	---	210	BURMARA BACK IN BLACK OF LUVPURRS	1.4 M	210	---	---	---	---	---
---	---	---	---	<u>210</u>	---		SBV 042609 015 BORN: 04/26/09	T6C		---	---	---	---	---
---	---	---	---	<u>209</u>	---		IW SGC Rickats Jack Trickortreat			---	---	---	---	---
---	---	---	---		---		Blacpur1 Hade of Burmara			---	---	---	---	---
---	---	---	---		---		B: Barbara Garneau/D Hetherington			---	---	---	---	---
---	---	---	---		---		GI O: Chris Unangst/Vanadis Crawford		GL	---	---	---	---	---
---	---	---	---		---		BEST OF DIVISION/BREED			<u>210</u>	---	---	---	---
---	---	---	---		---		2ND BEST OF DIVISION/BREED			<u>209</u>	---	---	---	---

BURMESE

SEPIA SOLID DIVISION

SABLE

---	---	---	---	<u>1</u>	---	211	WHIPPET OF BURMARA	1.10 M	211	---	---	---	---	---
---	---	---	---		---		SBT 101908 045 BORN: 10/19/08	DGC		---	---	---	---	---
---	---	---	---		---		Moravanka Mr Midnight			---	---	---	---	---
---	---	---	---		---		Moravanka Betty Boop			---	---	---	---	---
---	---	---	---		---		B: Johanne Maheux-Josée Sicotte			---	---	---	---	---
---	---	---	---	<u>211</u>	---		NE O: Barbara Garneau		NE	---	---	---	---	---
---	---	---	---		---		BEST OF DIVISION/BREED			<u>211</u>	---	---	---	---

EGYPTIAN MAU

TRADITIONAL SILVER/SMOKE DIVISION

BLACK SILVER SPOTTED TABBY

---	---	---	---	<u>1</u>	---	212	ARIETTA MAHABBAH AMTAL	1.0 M	212	---	---	---	---	---
---	---	---	---		---		SBT 090409 015 BORN: 09/04/09	RW TGC		---	---	---	---	---
---	---	---	---		---		Arietta Alidu Kalila			---	---	---	---	---
---	---	---	---		---		RW QGC Arietta Namira Isis			---	---	---	---	---
---	---	---	---		---		MA B/O: Evelyn Grado-Wolynies		MA	---	---	---	---	---
---	---	---	---	<u>212</u>	---		A: Claire Turner			---	---	---	---	---
---	---	---	---		---		BEST OF DIVISION/BREED			<u>212</u>	---	---	---	---

CHAMPIONSHIP
SHORTHAIR CATS

SATURDAY

PB PL RB FH DM RK

SUNDAY

MD PB DB OL LD JR

RB

EXOTIC SHORTHAIR

TRADITIONAL TABBY DIVISION

CREAM CLASSIC TABBY

_____	1	_____	213	BEAUCHADOR MES AIEUX	2.5 M	213	1	_____
_____		_____		SBV 032608 056 BORN: 03/26/08	RW	NOV		_____
_____		_____		Catta Lupin				_____
_____		_____		Beauchador Meme				_____
_____		_____		NE B/O: Andre Grenier			NE	_____
_____	213	_____		BEST OF DIVISION/BREED			213	_____

SIAMESE

POINTED SOLID DIVISION

CHOCOLATE POINT

_____	1	_____	214	ABHA BROWNSUGARKISS OF MINGHOU/CF	1.1 F	214	1	_____
_____		_____		SBT 072409 049 BORN: 07/24/09	GC			_____
_____		_____		Beï Canto Reveille of Shboï				_____
_____		_____		GC Minghou Chloe's Choice				_____
_____		_____		B: Carole Pulkowski/Pat Muise				_____
_____		_____		SC O: Pat - G Muise/Penny Garrett			SC	_____
_____	214	_____		BEST OF DIVISION/BREED			214	_____

SPHYNX

POINTED SOLID DIVISION

RED POINT

_____	1	_____	215	OPUSONE BUCK OWENS OF CLASSICALCATS	0.9 M	215	A	_____
_____		_____		SBT 120109 BORN: 12/01/09	NOV			_____
_____		_____		RW SGC Classicalcats Fiero				_____
_____		_____		Classicalcats Mystic of Opus One				_____
_____		_____		B: Martine Lavoie				_____
_____		_____		NE O: Jack & Phyllis			NE	_____
_____		_____		A: M Keith/C Wolfe				_____
_____	215	_____		BEST OF DIVISION/BREED			X	_____

25

CHAMPIONSHIP
SHORTHAIK CATS

SATURDAY

PB PL RB FH DM RK

SUNDAY

NO RB PB DB OL LD JR

TONKINESE

MINK SOLID DIVISION

LILAC MINK

----- 1 ----- 216 LUVPURRS DREAM WEAVER 1.0 M 216 A -----
SBT 081909 01/ BORN: 08/19/09 RW SGC
OS IW SGC Sazikatz Ring in the New Year
Sazikatz Sweet Dreams of Luvpurrs
B: Vanadis Crawford/Chris Unangst
SE O: Vanadis Crawford SE
----- 216 ----- X -----
BEST OF DIVISION/BREED



FINALS

THE INTERNATIONAL CAT ASSOCIATION

Club: Cats on the Beach PL AB RB AB DM AB RK AB PB SP LH FH SP SP

Location: Marstons Mills, MA

Date: Saturday, September 11, 2010 ^{AB} Congress 1 (^{AB}Champ) ^{AB} Congress 2 (^{AB}male) ^{AB} FH

JUDGE AB/SP	PL AB	RB AB	DM AB	RK AB	PB SP	LH	FH SP
KITTENS							
BEST	14	13	4	17	4	7	SH 66
2 ND	17	62	53	66	16	16	53
3 RD	63	57	65	63	20	13	62
4 TH	67	66	66	56	13	21	67
5 TH	64	8	63	8	21	2	57
6 TH	4	63	16	62	14	24	x
7 TH	61	1	57	51	2	4	x
8 TH	1	64	62	16	1	20	x
9 TH	62	16	69	15	17	1	x
10 TH	25	2	5	25	7	11	x
Cat Count	43	44	44	43	25	25	19

JUDGE AB/SP	PL AB	RB AB	DM AB	RK AB	PB SP	LH	FH SP
CATS							
BEST	211	214	214	212	115	112	201
2 ND	113	216	112	201	107	113	202
3 RD	212	115	126	101	130	120	210
4 TH	207	215	115	117	117	122	214
5 TH	104	211	203	214	101	119	215
6 TH	210	210	105	202	120	103	x
7 TH	175	117	128	129	119	115	x
8 TH	130	201	202	115	122	130	x
9 TH	214	130	211	216	103	117	x
10 TH	213	120	201	119	125	101	x
Cat Count	44	46	46	46	33	31	14

JUDGE AB/SP	PL AB	RB AB	DM AB	RK AB	PB SP	LH	FH SP
ALTERS							
BEST	360	364	305	306	308	310	364
2 ND	306	306	364	310	309	308	362
3 RD	362	365	365	360	306	305	365
4 TH	352	353	303	365	311	303	352
5 TH	308	308	309	301	305	312	355
6 TH	361	309	362	362	x	x	x
7 TH	357	312	363	309	x	x	x
8 TH	312	363	353	353	x	x	x
9 TH	310	352	361	305	x	x	x
10 TH	301	351	366	352	x	x	x
Cat Count	26	26	26	26	11	11	15



THE INTERNATIONAL CAT ASSOCIATION

FINALS

Club: Cats on the Beach

Location: Marstons Mill, MA

Date: Saturday - September 11, 2010

JUDGE AB/SP PL AB RB AB DM AB RK AB PB SP 2H 2H 3H FH SP 4H 5H Congress 1 () AB Congress 1 () AB

HHPK

BEST	401	402	401	402	452	401	401	452	401	453	401	453	401	453	401	453	401	453
2 ND	402	401	401	402	453	401	402	453	402	453	401	453	402	453	401	453	402	453
3 RD	453	453	402	452	x	x	x	x	x	x	x	x	x	x	x	x	x	x
4 TH	452	x	x	x	x	x	x	x	x	x	x	x	x	x	x	x	x	x
5 TH	x	x	x	x	x	x	x	x	x	x	x	x	x	x	x	x	x	x
6 TH	x	x	x	x	x	x	x	x	x	x	x	x	x	x	x	x	x	x
7 TH	x	x	x	x	x	x	x	x	x	x	x	x	x	x	x	x	x	x
8 TH	x	x	x	x	x	x	x	x	x	x	x	x	x	x	x	x	x	x
9 TH	x	x	x	x	x	x	x	x	x	x	x	x	x	x	x	x	x	x
10 TH	x	x	x	x	x	x	x	x	x	x	x	x	x	x	x	x	x	x
Cat Count	4	4	4	4	4	4	4	4	4	4	4	4	4	4	4	4	4	4

HHP

BEST	458	464	458	464	464	404	404	460	404	460	404	460	404	460	404	460	404	460
2 ND	406	458	464	458	458	461	408	457	408	457	461	457	408	457	461	457	408	457
3 RD	460	404	404	404	404	458	406	458	406	458	406	458	406	458	406	458	406	458
4 TH	404	462	460	462	462	406	407	461	407	461	406	461	407	461	406	461	407	461
5 TH	461	405	460	405	405	464	405	465	405	465	464	465	405	465	464	465	405	465
6 TH	x	x	x	x	x	x	x	x	x	x	x	x	x	x	x	x	x	x
7 TH	x	x	x	x	x	x	x	x	x	x	x	x	x	x	x	x	x	x
8 TH	x	x	x	x	x	x	x	x	x	x	x	x	x	x	x	x	x	x
9 TH	x	x	x	x	x	x	x	x	x	x	x	x	x	x	x	x	x	x
10 TH	x	x	x	x	x	x	x	x	x	x	x	x	x	x	x	x	x	x
Cat Count	17	17	17	17	17	17	17	17	17	17	17	17	17	17	17	17	17	17

ANB COUNT

PNB COUNT

NT COUNT



FINALS

THE INTERNATIONAL CAT ASSOCIATION

Club: Cats on the Beach
Date: Sunday, September 12, 2010
 Location: Marstons Mills, MA
 Congress 1 (AB) Congress 2 (AB)
 AB Group AB
 RB AB
 RK

JUDGE: MD AB
 AB/SP PB AB DB AB OL AB LD SP AB

JUDGE AB/SP	MD AB	PB AB	DB AB	OL AB	LD SP AB	LH	SP	JR
KITTENS								
BEST	20	66	66	14	13	15	5H	
2 ND	51	62	57	4	64	7	70	
3 RD	62	4	17	63	68	3	62	
4 TH	56	20	35	64	16	20	63	
5 TH	16	16	5	80	53	25	64	
6 TH	14	64	16	51	62	16	x	
7 TH	64	21	64	16	63	26	x	
8 TH	63	69	51	57	28	8	x	
9 TH	57	1	62	62	65	32	x	
10 TH	26	63	2	61	21	24	x	
Cat Count	42	45	44	43	44	26	18	

CATS	BEST	2 ND	3 RD	4 TH	5 TH	6 TH	7 TH	8 TH	9 TH	10 TH	Cat Count
BEST	210	117	216	112	216	117	214	211	214	214	214
2 ND	202	201	120	201	120	128	201	201	214	214	214
3 RD	201	214	202	216	202	101	210	210	214	214	214
4 TH	214	212	210	213	210	115	212	211	210	210	210
5 TH	115	211	101	124	101	119	211	211	210	210	210
6 TH	120	212	201	212	201	130	x	x	130	130	130
7 TH	216	202	115	210	115	103	x	x	105	105	105
8 TH	117	119	212	214	212	129	x	x	119	119	119
9 TH	122	122	130	117	130	121	x	x	101	101	101
10 TH	211	112	103	130	103	104	x	x	212	212	212
Cat Count	44	43	45	44	45	31	13	13	40	40	40

ALTERS	BEST	2 ND	3 RD	4 TH	5 TH	6 TH	7 TH	8 TH	9 TH	10 TH	Cat Count
BEST	362	365	362	306	362	304	359	362	362	362	362
2 ND	363	360	361	360	361	312	362	362	362	362	362
3 RD	359	310	360	310	360	306	362	352	362	362	362
4 TH	306	352	365	351	365	302	364	364	352	352	352
5 TH	309	361	306	362	306	310	360	360	364	364	364
6 TH	352	354	359	352	309	x	x	x	360	360	360
7 TH	308	306	306	354	359	x	x	x	x	x	x
8 TH	361	351	308	308	302	x	x	x	x	x	x
9 TH	365	359	312	359	312	x	x	x	x	x	x
10 TH	354	363	310	361	310	x	x	x	x	x	x
Cat Count	25	25	25	26	25	10	16	16	16	16	16



THE INTERNATIONAL CAT ASSOCIATION **FINALS**

Club: Cats on the Beach

Location: Marstons Mill, MA

Date: Sunday - September 12, 2010

JUDGE AB/SP MD AB PB DB AB OL AB LD AB Congress 1 () AB Congress 2 () AB

JUDGE AB/SP	MD AB	PB AB	DB AB	OL AB	LD AB	JR SP
HHPK						
BEST	402	401	453	401	453	SH LH
2 ND	453	452	402	452	452	453 402
3 RD	401	402	401	402	401	401
4 TH	452	453	452	453	402	x
5 TH	x	x	x	x	x	x
6 TH	x	x	x	x	x	x
7 TH	x	x	x	x	x	x
8 TH	x	x	x	x	x	x
9 TH	x	x	x	x	x	x
10 TH	x	x	x	x	x	x
Cat Count	4	4	4	4	4	2

JUDGE AB/SP	MD AB	PB AB	DB AB	OL AB	LD AB	JR SP
HHP						
BEST	460	463	460	458	461	462 405
2 ND	406	460	458	457	458	457 407
3 RD	465	408	406	460	464	458 704
4 TH	458	456	455	408	460	463 706
5 TH	457	464	464	466	404	461 408
6 TH	x	x	x	x	x	x
7 TH	x	x	x	x	x	x
8 TH	x	x	x	x	x	x
9 TH	x	x	x	x	x	x
10 TH	x	x	x	x	x	x
Cat Count	16	16	16	16	16	11

ANB COUNT

PNB COUNT

NT COUNT